

RPF834Mu01 100µg

**Recombinant Transient Receptor Potential Cation Channel Subfamily M, Member 4
(TRPM4)**

Organism Species: *Mus musculus* (Mouse)

Instruction manual

FOR RESEARCH USE ONLY
NOT FOR USE IN CLINICAL DIAGNOSTIC PROCEDURES

12th Edition (Revised in Aug, 2016)

[PROPERTIES]

Source: Prokaryotic expression

Host: *E.coli*

Residues: Met1~Leu450

Tags: N-terminal His Tag

Subcellular Location: Membrane

Purity: > 90%

Traits: Freeze-dried powder

Buffer formulation: 20mM Tris, 150mM NaCl, pH8.0, containing 0.01% SKL, 5% Trehalose.

Original Concentration: 200µg/mL

Applications: Positive Control; Immunogen; SDS-PAGE; WB.

(May be suitable for use in other assays to be determined by the end user.)

Predicted isoelectric point: 5.5

Predicted Molecular Mass: 52.7kDa

Accurate Molecular Mass: 57kDa as determined by SDS-PAGE reducing conditions.

Phenomenon explanation:

The possible reasons that the actual band size differs from the predicted are as follows:

1. Splice variants: Alternative splicing may create different sized proteins from the same gene.
2. Relative charge: The composition of amino acids may affect the charge of the protein.
3. Post-translational modification: Phosphorylation, glycosylation, methylation etc.
4. Post-translation cleavage: Many proteins are synthesized as pro-proteins, and then cleaved to give the active form.
5. Polymerization of the target protein: Dimerization, multimerization etc.

[USAGE]

Reconstitute in 20mM Tris, 150mM NaCl (pH8.0) to a concentration of 0.1-1.0 mg/mL. Do not vortex.

[STORAGE AND STABILITY]

Storage: Avoid repeated freeze/thaw cycles.

Store at 2-8°C for one month.

Aliquot and store at -80°C for 12 months.

Stability Test: The thermal stability is described by the loss rate. The loss rate was determined by accelerated thermal degradation test, that is, incubate the protein at 37°C for 48h, and no obvious degradation and precipitation were observed. The loss rate is less than 5% within the expiration date under appropriate storage condition.

[SEQUENCE]

```
MVGPEKEQSW IPKIFRKKVC TTFIVDLSDD AGGTLQCQGG PRDAHPSVAV
EDAFGAAVT EWNSDEHTTE KPTDAYGDLT FTYSGRKHSN FLRLSDRTDP
ATVYSLVTRS WGFRAPNLVV SVLGGSGGPV LQTLWQDLLR RGLVRAAQST
GAWIVTGGHL TGIGRHVGVV VRDHQTASTG SSKVVAMGVA PWGVVNRDM
LINPKGSFPA RYRWRGDPED GVEFPLDYNV SAFFLVDDGT YGRLGGENRF
RLRFESYVAQ QKTGVGGTGI DIPVLLLLID GDEKMLKRIE DATQAQLPCL
LVAGSGGAAD CLVETLEDTL APGSGGLRRG EARDRIRRYF PKGDPEVLQA
QVERIMTRKE LLTVYSSDVG SEEFETIVLR ALVKACGSSE ASAYLDELRL
AVAWNRVDIA QSELFRGDIQ WRSFHLEASL MDALLNDRPE FVRLLIHSHL
```

[IDENTIFICATION]

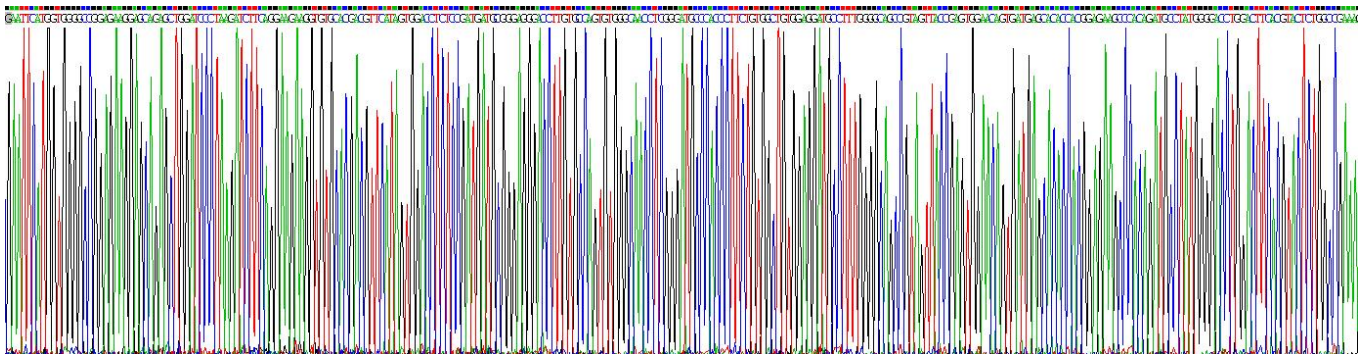


Figure . Gene Sequencing (extract)

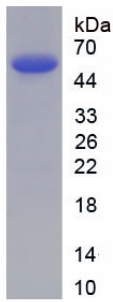


Figure. SDS-PAGE

[IMPORTANT NOTE]

The kit is designed for research use only, we will not be responsible for any issue if the kit was used in clinical diagnostic or any other procedures.