

**RPA753Hu03 100µg**

**Recombinant Toll Like Receptor 4 (TLR4)**

**Organism Species: *Homo sapiens (Human)***

***Instruction manual***

FOR RESEARCH USE ONLY

NOT FOR USE IN CLINICAL DIAGNOSTIC PROCEDURES

---

13th Edition (Revised in Aug, 2023)

**[ PROPERTIES ]**

**Source:** Prokaryotic expression

**Host:** *E.coli*

**Residues:** Phe326~Ile634

**Tags:** His and TrxA Taq

**Subcellular Location:** Membrane

**Purity:** > 80%

**Traits:** Freeze-dried powder

**Buffer formulation:** PBS, pH7.4, containing 0.01% SKL, 5% Trehalose .

**Original Concentration:** 200µg/mL

**Applications:** Positive Control; Immunogen; SDS-PAGE; WB.

(May be suitable for use in other assays to be determined by the end user.)

**Predicted isoelectric point:** 5.8

**Predicted Molecular Mass:** 55.7kDa

**Accurate Molecular Mass:** 55kDa as determined by SDS-PAGE reducing conditions.

**[ USAGE ]**

Reconstitute in 10mM PBS (pH7.4) to a concentration of 0.1-1.0 mg/mL. Do not vortex.

**[ STORAGE AND STABILITY ]**

**Storage:** Avoid repeated freeze/thaw cycles.

Store at 2-8°C for one month.

Aliquot and store at -80°C for 12 months.

**Stability Test:** The thermal stability is described by the loss rate. The loss rate was determined by accelerated thermal degradation test, that is, incubate the protein at 37°C for 48h, and no obvious degradation and precipitation were observed. The loss rate is less than 5% within the expiration date under appropriate storage condition.

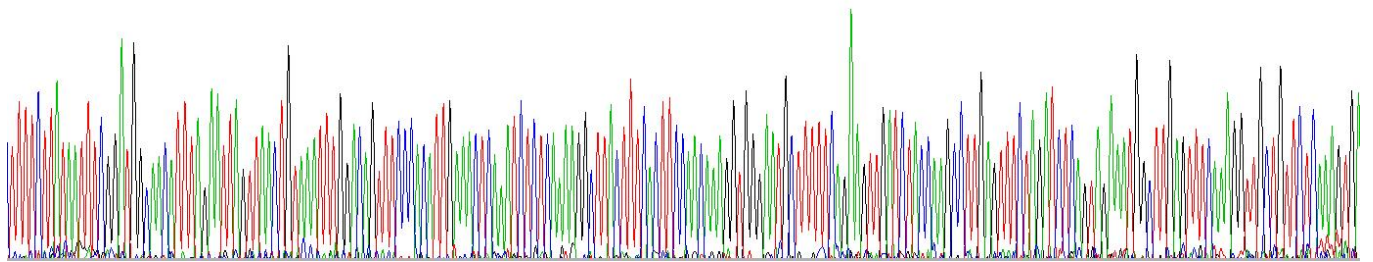
**[ SEQUENCE ]**

```

          FSYNF  GWQHLELVNC  KFGQFPTLKL
KSLKRLTFTS  NKGGNAFSEV  DLPSLEFLDL  SRNGLSFKGC  CSQSDFGTTS
LKYLDLSFNG  VITMSSNFLG  LEQLEHLDFQ  HSNLKQMSEF  SVFLSLRNLI
YLDISHTHTR  VAFNGIFNGL  SSLEVLKMAG  NSFQENFLPD  IFTELRLNLF
LDLSQCQLEQ  LSPTAFNSLS  SLQVLNMSHN  NFFSLDTPY  KCLNSLQVLD
YSLNHIMTSK  KQELQHPSS  LAFLNLTQND  FACTCEHQSF  LQWIKDQRQL
LVEVERMECA  TPSDKQGMPV  LSLNITQMN  KTII
    
```

**[ IDENTIFICATION ]**

F S Y N F G V Q H L E L V N C K F G Q F P T L K L K S L K R L T F T S N K G G N A F S E V D L P S L E F L D L S R N G L S F K G C C S Q S D



**Figure . Gene Sequencing (extract)**

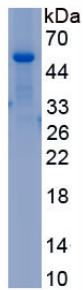


Figure. SDS-PAGE

**[ IMPORTANT NOTE ]**

The kit is designed for research use only, we will not be responsible for any issue if the kit was used in clinical diagnostic or any other procedures.