

**RPB983Ra01 10µg**

**Recombinant Tau Protein (MAPT)**

**Organism Species: *Rattus norvegicus* (Rat)**

***Instruction manual***

FOR RESEARCH USE ONLY

NOT FOR USE IN CLINICAL DIAGNOSTIC PROCEDURES

---

13th Edition (Revised in Aug, 2023)

**[ PROPERTIES ]**

**Source:** Prokaryotic expression

**Host:** *E.coli*

**Residues:** Ala34~Ser368

**Tags:** N-terminal His Tag

**Subcellular Location:** Membrane, Cytoplasm

**Purity:** > 80%

**Traits:** Freeze-dried powder

**Buffer formulation:** PBS, pH7.4, containing 0.01% Sarcosyl, 5% Trehalose.

**Original Concentration:** 50µg/mL

**Applications:** Positive Control; Immunogen; SDS-PAGE; WB.

(May be suitable for use in other assays to be determined by the end user.)

**Predicted isoelectric point:** 9.9

**Predicted Molecular Mass:** 38.4kDa

**Accurate Molecular Mass:** 40kDa as determined by SDS-PAGE reducing conditions.

**[ USAGE ]**

Reconstitute in ddH<sub>2</sub>O to a concentration less than or equal to 0.1mg/mL. Do not vortex.

**[ STORAGE AND STABILITY ]**

**Storage:** Avoid repeated freeze/thaw cycles.

Store at 2-8°C for one month.

Aliquot and store at -80°C for 12 months.

**Stability Test:** The thermal stability is described by the loss rate. The loss rate was determined by accelerated thermal degradation test, that is, incubate the protein at 37°C for 48h, and no obvious degradation and precipitation were observed. The loss rate is less than 5% within the expiration date under appropriate storage condition.

**[ SEQUENCE ]**

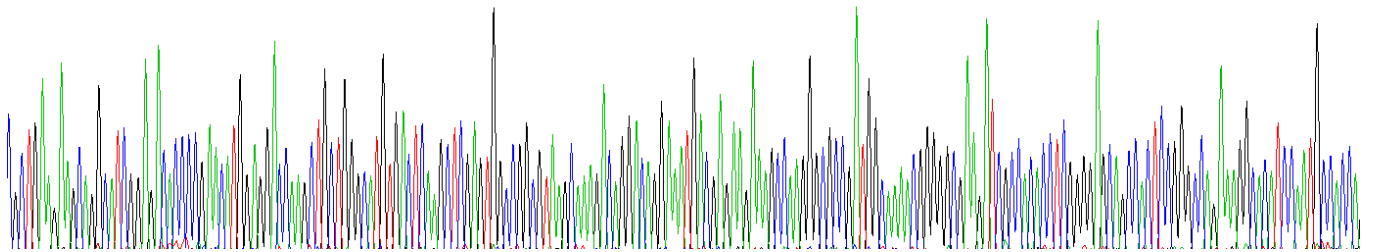
```

                                AEEAGIG DTPNMQAA
GHVTQARVAG VSKDRTGNDE KKAKGADGKT GAKIATPRGA ATPGQKGTSN
ATRIPAKTTP SPKTPPGSGE PPKSGERSGY SSPGSPGTPG SRSRTPSLPT
PPTREPKKVA VVRTPPKSPS ASKSRLQTAP VPMPDLKNVR SKIGSTENLK
HQPGGGKVQI INKKLDLSNV QSKCGSKDNI KHVPGGGSVH IVYKPVDSLK
VTSKCGSLGN IHHKPGGGQV EVKSEKDFK DRVQSKIGSL DNITHVPGGG
NKKIETHKLT FRENAKAKTD HGAEIVYKSP VVSGDTSPRH LSNVSSTGSI
DMVDSPQLAT LADEVAS
    
```

**[ IDENTIFICATION ]**

```

TGC TGA GAC CAG CCA TGG AGA CAC CCG CAC ATG GAG CCA CAG CTG CTT GGC ATG TGA CTT GAA GCT GAG TGG CCG GGT AAC CAA GAC AGG AC CAG GAA ATG ACG AAG AAG ACC AAG GGG TCG GAT GGC AAA ACC GGG GCG AAT GGC ACC CTT GCG GAG CAG CCG CTT CCG GGC CAG AAG GGC CAC TCC AAT GCG ACC A
A E E A G I G D T P N H E D Q A A G H V T Q A R V A G V S K D R T G N D E K K A K G A D G K T G A K I A T P R G A A T P G Q K G T S N A T R
    
```



**Figure. Gene Sequencing (Extract)**

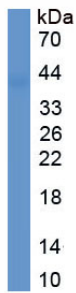


Figure. SDS-PAGE

**[ IMPORTANT NOTE ]**

The kit is designed for research use only, we will not be responsible for any issue if the kit was used in clinical diagnostic or any other procedures.