

RPC882Hu01 100ug

Recombinant Symplekin (SYMPK)

Organism Species: *Homo sapiens (Human)*

Instruction manual

FOR RESEARCH USE ONLY

NOT FOR USE IN CLINICAL DIAGNOSTIC PROCEDURES

13th Edition (Revised in Aug, 2023)

[PROPERTIES]

Source: Prokaryotic expression

Host: *E.coli*

Residues: Met1~Lys347

Tags: N-terminal His Tag

Subcellular Location: Cytoplasm

Purity: > 95%

Traits: Freeze-dried powder

Buffer formulation: PBS, pH7.4, containing 0.01% SKL, 5% Trehalose.

Original Concentration: 200µg/mL

Applications: Positive Control; Immunogen; SDS-PAGE; WB.

(May be suitable for use in other assays to be determined by the end user.)

Predicted isoelectric point: 5.9

Predicted Molecular Mass: 42.6kDa

Accurate Molecular Mass: 43kDa as determined by SDS-PAGE reducing conditions.

[USAGE]

Reconstitute in 10mM PBS (pH7.4) to a concentration of 0.1-1.0 mg/mL. Do not vortex.

[STORAGE AND STABILITY]

Storage: Avoid repeated freeze/thaw cycles.

Store at 2-8°C for one month.

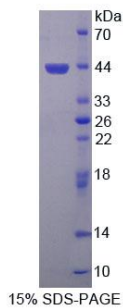
Aliquot and store at -80°C for 12 months.

Stability Test: The thermal stability is described by the loss rate. The loss rate was determined by accelerated thermal degradation test, that is, incubate the protein at 37°C for 48h, and no obvious degradation and precipitation were observed. The loss rate is less than 5% within the expiration date under appropriate storage condition.

[SEQUENCE]

```
MASGSGDSVT RRSVASQFFT QEEGPGIDGM TTSERVVDLL NQAALITNDS  
KITVLKQVQE LIINKDPTLL DNFLDEIIAF QADKSIEVRK FVIGFIEEAC  
KRDIELLLKL IANLNMLLRD ENVNVVKKAI LTMTQLYKVA LQWMVKSRI  
SELQEACWDM VSAMAGDIIL LLSDNDGIR THAIKFVEGL IVTLSPRMAD  
SEIPRRQEHDI SLDRIPRDH PYIQYNVLWE EGKAALEQLL KFMVHFAISS  
INLTTALGSL ANIARQRPMF MSEVIQAYET LHANLPPTLA KSQVSSVRKN  
LKLHLLSVLK HPASLEFQAQ ITLLVLDLGT PQAEIARNMP SSKDTRK
```

[IDENTIFICATION]



[IMPORTANT NOTE]

The kit is designed for research use only, we will not be responsible for any issue if the kit was used in clinical diagnostic or any other procedures.