

**RPE644Hu01 100ug**

**Recombinant FK506 Binding Protein 4 (FKBP4)**

**Organism Species: *Homo sapiens (Human)***

***Instruction manual***

FOR RESEARCH USE ONLY

NOT FOR USE IN CLINICAL DIAGNOSTIC PROCEDURES

---

13th Edition (Revised in Aug, 2023)

**[ PROPERTIES ]**

**Source:** Prokaryotic expression

**Host:** *E.coli*

**Residues:** Thr2~Ala459

**Tags:** N-terminal His and GST Tag

**Subcellular Location:** Nucleus, Mitochondrion, Cytoplasm

**Purity:** > 90%

**Traits:** Freeze-dried powder

**Buffer formulation:** PBS, pH7.4, containing 0.01% SKL, 5% Trehalose.

**Original Concentration:** 200µg/mL

**Applications:** Positive Control; Immunogen; SDS-PAGE; WB.

(May be suitable for use in other assays to be determined by the end user.)

**Predicted isoelectric point:** 5.3

**Predicted Molecular Mass:** 81.7kDa

**Accurate Molecular Mass:** 82kDa as determined by SDS-PAGE reducing conditions.

**[ USAGE ]**

PBS, pH7.4, containing 0.01% SKL, 5% Trehalose.

**[ STORAGE AND STABILITY ]**

**Storage:** Avoid repeated freeze/thaw cycles.

Store at 2-8°C for one month.

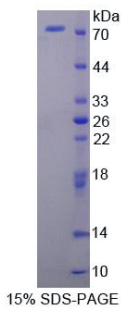
Aliquot and store at -80°C for 12 months.

**Stability Test:** The thermal stability is described by the loss rate. The loss rate was determined by accelerated thermal degradation test, that is, incubate the protein at 37°C for 48h, and no obvious degradation and precipitation were observed. The loss rate is less than 5% within the expiration date under appropriate storage condition.

**[ SEQUENCE ]**

TAEEMKATE SGAQSAPLPM EGVDISPKQD EGVLKVIKRE GTGTEMPMIG  
DRVVFVHYTGW LLDGTKFDSS LDRKDKFSFD LGKGEVIKAW DIAIATMKVG  
EVCHITCKPE YAYGSAGSPP KIPPNATLVF EVELFEFKGE DLTEEDGGI  
IRRIQTRGEG YAKPNEGAIV EVALEGYKYD KLFDQRELRF EIGEENLDL  
PYGLERAIQR MEKGEHSIVY LKPSYAFGSV GKEKFQIPPN AELKYELHLK  
SFEKAKESWE MNSEEKLEQS TIVKERGTVY FKEGKYKQAL LQYKKIVSWL  
EYESSFSNEE AQKAQALRLA SHLNLAMCHL KLQAFSAAIE SCNKALELDS  
NNEKGLFRRG EAHLAVNDFE LARADFQKVL QLYPNNKAAK TQLAVCQORI  
RRQLAREKKL YANMFERLAE EENKAKAEAS SGDHPDTEM KEEQKSNTAG  
SQSQVETEA

**[ IDENTIFICATION ]**



**[ IMPORTANT NOTE ]**

The kit is designed for research use only, we will not be responsible for any issue if the kit was used in clinical diagnostic or any other procedures.