

**RPF163Mu01 100 µg**

**Recombinant Death Associated Protein Kinase 3 (DAPK3)**

**Organism Species: *Mus musculus* (Mouse)**

***Instruction manual***

FOR RESEARCH USE ONLY

NOT FOR USE IN CLINICAL DIAGNOSTIC PROCEDURES

---

13th Edition (Revised in Aug, 2023)

**[ PROPERTIES ]**

**Source:** Prokaryotic expression

**Host:** *E.coli*

**Residues:** Met1~Arg448

**Tags:** N-terminal His Tag

**Subcellular Location:** Nucleus

**Purity:** > 97%

**Traits:** Freeze-dried powder

**Buffer formulation:** PBS, pH7.4, containing 0.01% SKL, 5% Trehalose

**Original Concentration:** 200µg/mL

**Applications:** Positive Control; Immunogen; SDS-PAGE; WB.

(May be suitable for use in other assays to be determined by the end user.)

**Predicted isoelectric point:** 8.91

**Predicted Molecular Mass:** 55.1kDa

**Accurate Molecular Mass:** 55kDa as determined by SDS-PAGE reducing conditions.

**[ USAGE ]**

Reconstitute in 10mM PBS (pH7.4) to a concentration of 0.1-1.0 mg/mL. Do not vortex.

**[ STORAGE AND STABILITY ]**

**Storage:** Avoid repeated freeze/thaw cycles.

Store at 2-8°C for one month.

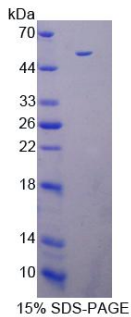
Aliquot and store at -80°C for 12 months.

**Stability Test:** The thermal stability is described by the loss rate. The loss rate was determined by accelerated thermal degradation test, that is, incubate the protein at 37°C for 48h, and no obvious degradation and precipitation were observed. The loss rate is less than 5% within the expiration date under appropriate storage condition.

**[ SEQUENCE ]**

MSTFRQEDVE DHYEMGEELG SGQFAIVRKC QQKGTGMEYA AKFIKKRRLP  
SSRRGVSREE IEREVSILRE IRHPNIITLH DVFENKTDVV LILELVSGGE  
LFDFLAEKES LTEDSATQFL KQILDGVHYL HSKRIAHFDL KPENIMLLDK  
HAASPRIKLI DFGIAHRIEA GSEFKNIFGT PEFVAPEIVN YEPLGLEADM  
WSIGVITYIL LSGASPFLGE TKQETLTNIS AVNYDFDEEY FSSTSELAKD  
FIRRLVKDP KRRMTIAQSL EHSWIKVRRR EDGARKPERR RLRAARLREY  
SLKSHSSMPR NTSYASFERF SRVLEDVAAA EQGLRELQRG RRQCRERVCA  
LRAAAEQREA RCRDGSAGLG RDLRRLRTEL GRTEALRTRA QEEARAALLG  
AGGLKRRLCR LENRYDALAA QVAAEVQFVR DLVRALEQER LQAECGVR

**[ IDENTIFICATION ]**



**[ IMPORTANT NOTE ]**

The kit is designed for research use only, we will not be responsible for any issue if the kit was used in clinical diagnostic or any other procedures.