

**RPD541Hu01 200µg**

**Recombinant Cytochrome P450 26B1 (CYP26B1)**

**Organism Species: *Homo sapiens (Human)***

***Instruction manual***

FOR RESEARCH USE ONLY

NOT FOR USE IN CLINICAL DIAGNOSTIC PROCEDURES

---

12th Edition (Revised in Aug, 2016)

**[ PROPERTIES ]**

**Source:** Prokaryotic expression

**Host:** *E.coli*

**Residues:** Met1~Val512

**Tags:** N-terminal His Tag

**Subcellular Location:** Membrane

**Purity:** > 97%

**Traits:** Freeze-dried powder

**Buffer formulation:** 20mM Tris, 150mM NaCl, pH8.0, containing 0.01% SKL, 5% Trehalose.

**Original Concentration:** 80µg/mL

**Applications:** Positive Control; Immunogen; SDS-PAGE; WB.

(May be suitable for use in other assays to be determined by the end user.)

**Predicted isoelectric point:** 8.8

**Predicted Molecular Mass:** 61.3kDa

**Accurate Molecular Mass:** 61kDa as determined by SDS-PAGE reducing conditions.

**[ USAGE ]**

Reconstitute in ddH<sub>2</sub>O to a concentration of 0-0.5 mg/mL. Do not vortex.

**[ STORAGE AND STABILITY ]**

**Storage:** Avoid repeated freeze/thaw cycles.

Store at 2-8°C for one month.

Aliquot and store at -80°C for 12 months.

**Stability Test:** The thermal stability is described by the loss rate. The loss rate was determined by accelerated thermal degradation test, that is, incubate the protein at 37°C for 48h, and no obvious degradation and precipitation were observed. The loss rate is less than 5% within the expiration date under appropriate storage condition.

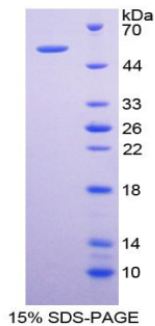
**[ SEQUENCE ]**

```

MLFEGLDLVS  ALATLAACLV  SVTLLLAVSQ  QLWQLRWAAT  RDKSCKLPIP
KGSMGFPLIG  ETGHWLLQGS  GFQSSRREKY  GNVFKTHLLG  RPLIRVTGAE
NVRKILMGEH  HLVSTEWPRS  TRMLLGPNTV  SNSIGDIHRN  KRKVFSKIFS
HEALESYLPK  IQLVIQDTRL  AWSSHPEAIN  VYQEAQKLTG  RMAIRVLLGF
SIPEEDLGH  FEVYQQFVDN  VFSLPVDLPF  SGYRRGIQAR  QILQKGLEKA
IREKLQCTQG  KDYLDALDLL  IESSKEHGKE  MTMQELKDGT  LELIFAAYAT
TASASTSLIM  QLLKHPTVLE  KLRDELRAHG  ILHSGGCPCE  GTLRDLTSLG
LRYLDCVIKE  VMRLFTPISG  GYRTVLQTFE  LDGFQIPKGW  SVMYSIRDTH
DTAPVFKDVN  VFDPPDRFSQ  RSEDKDGRFH  YLPFGGGVRT  CLGKHLAKLF
LKVLAVELAS  TSRFELATRT  FPRITLVPVL  HPVDGLSVKF  FGLDSNQNEI
LPETEAMLSA  TV

```

**[ IDENTIFICATION ]**



**[ IMPORTANT NOTE ]**

The kit is designed for research use only, we will not be responsible for any issue if the kit was used in clinical diagnostic or any other procedures.