

**RPE623Mu01 100µg**

**Recombinant Cyclin Dependent Kinase 20 (CDK20)**

**Organism Species: *Mus musculus* (Mouse)**

***Instruction manual***

FOR RESEARCH USE ONLY

NOT FOR USE IN CLINICAL DIAGNOSTIC PROCEDURES

---

13th Edition (Revised in Aug, 2023)

**[ PROPERTIES ]**

**Source:** Prokaryotic expression

**Host:** *E.coli*

**Residues:** Tyr4~Phe288

**Tags:** N-terminal His Tag

**Subcellular Location:** Nucleus

**Purity:** > 95%

**Traits:** Freeze-dried powder

**Buffer formulation:** PBS, pH7.4, containing 0.01% SKL, 5% Trehalose .

**Original Concentration:** 200µg/mL

**Applications:** Positive Control; Immunogen; SDS-PAGE; WB.

(May be suitable for use in other assays to be determined by the end user.)

**Predicted isoelectric point:** 6.5

**Predicted Molecular Mass:** 35.4kDa

**Accurate Molecular Mass:** 35kDa as determined by SDS-PAGE reducing conditions.

**[ USAGE ]**

Reconstitute in 10mM PBS (pH7.4) to a concentration of 0.1-1.0 mg/mL. Do not vortex.

**[ STORAGE AND STABILITY ]**

**Storage:** Avoid repeated freeze/thaw cycles.

Store at 2-8°C for one month.

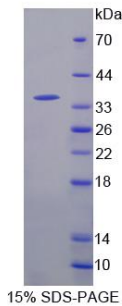
Aliquot and store at -80°C for 12 months.

**Stability Test:** The thermal stability is described by the loss rate. The loss rate was determined by accelerated thermal degradation test, that is, incubate the protein at 37°C for 48h, and no obvious degradation and precipitation were observed. The loss rate is less than 5% within the expiration date under appropriate storage condition.

**[ SEQUENCE ]**

YCILGRI GEGAHGIVFK AKHVETGEIV ALKKVALRRL EDGIPNQALR EIKALQEIED SQYVWQLKAV  
FPHGAGFVLA FEFMLSDLAE VVRHAQRPLA PAQVKSYLQM LLKGVAFCHA NNIVHRDLKP ANLLISASGQ  
LKIADFGLAR VFSPDGGRLY THQVATRWR YR APELLYGARQ YDQGVDLWAV GCIMGELLNG SPLFPGENDI  
EQLCCVLRIL GTPSPRVWPE ITELDPYINKI SFKEQAPVPL EEVLPDASPQ ALDLLGQFLL YPPRQRIAAS  
QALLHQYF

**[ IDENTIFICATION ]**



**[ IMPORTANT NOTE ]**

The kit is designed for research use only, we will not be responsible for any issue if the kit was used in clinical diagnostic or any other procedures.