

RPC968Hu01 50ug

Recombinant Cathepsin W (CTSW)

Organism Species: *Homo sapiens* (Human)

Instruction manual

FOR RESEARCH USE ONLY

NOT FOR USE IN CLINICAL DIAGNOSTIC PROCEDURES

12th Edition (Revised in Aug, 2016)

[**PROPERTIES**]

Source: Prokaryotic expression

Host: *E.coli*

Residues: Ile22~Pro376

Tags: N-terminal His Tag

Subcellular Location: Secreted

Purity: > 90%

Traits: Freeze-dried powder

Buffer formulation: 100mMNaHCO₃, 500mMNaCl, pH8.3, containing 0.01% SKL, 5% Trehalose.

Original Concentration: 200µg/mL

Applications: Positive Control; Immunogen; SDS-PAGE; WB.

(May be suitable for use in other assays to be determined by the end user.)

Predicted isoelectric point: 7.2

Predicted Molecular Mass: 43.8kDa

Accurate Molecular Mass: 44kDa as determined by SDS-PAGE reducing conditions.

[**USAGE**]

Reconstitute in ddH₂O to a concentration of 0.1-0.5 mg/mL. Do not vortex.

[**STORAGE AND STABILITY**]

Storage: Avoid repeated freeze/thaw cycles.

Store at 2-8°C for one month.

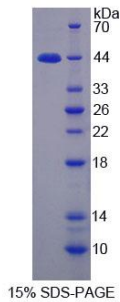
Aliquot and store at -80°C for 12 months.

Stability Test: The thermal stability is described by the loss rate. The loss rate was determined by accelerated thermal degradation test, that is, incubate the protein at 37°C for 48h, and no obvious degradation and precipitation were observed. The loss rate is less than 5% within the expiration date under appropriate storage condition.

[**SEQUENCE**]

		IRGPLRAQD	LGPQPLELKE	AFKLFQIQFN
RSYLSPEEHA	HRLDIFAHNL	AQAQLQEED	LGTAIEFGVTP	FSDLTEEEFG
QLYGYRRAAG	GVPSMGREIR	SEEPEESVPF	SCDWRKVASA	ISPIKDQKNC
NCCWAMAAAG	NIETLWRISF	WDFVDVSVQE	LLDCGRCDG	CHGGFVWDAF
ITVLNNSGLA	SEKDYPFQGK	VRAHRCHPKK	YQKVAWIQDF	IMLQNEHRI
AQYLATYGPI	TVTINMKPLQ	LYRKGVIKAT	PTTCDPQLVD	HSVLLVGFSG
VKSEEGIWAE	TVSSQSQQP	PHPTPYWILK	NSWGAQWGEK	GYFRLHRGSN
TCGITKFPLT	ARVQKPMKP	RVSCPP		

[IDENTIFICATION]



[IMPORTANT NOTE]

The kit is designed for research use only, we will not be responsible for any issue if the kit was used in clinical diagnostic or any other procedures.