

**RPG369Rb01 200µg**

**Recombinant ATPase, Na<sup>+</sup>/K<sup>+</sup> Transporting Alpha 1 Polypeptide (ATP1a1)**

**Organism Species: *Oryctolagus cuniculus* (Rabbit)**

***Instruction manual***

FOR RESEARCH USE ONLY

NOT FOR USE IN CLINICAL DIAGNOSTIC PROCEDURES

---

13th Edition (Revised in Aug, 2023)

**[ PROPERTIES ]**

**Source:** Prokaryotic expression

**Host:** *E.coli*

**Residues:** Thr339~Leu772

**Tags:** N-terminal His Tag

**Subcellular Location:** Membrane

**Purity:** > 80%

**Traits:** Freeze-dried powder

**Buffer formulation:** PBS, pH7.4, containing 0.01% SKL, 5% Trehalose.

**Original Concentration:** 120µg/mL

**Applications:** Positive Control; Immunogen; SDS-PAGE; WB.

(May be suitable for use in other assays to be determined by the end user.)

**Predicted isoelectric point:** 5.3

**Predicted Molecular Mass:** 50.9kDa

**Accurate Molecular Mass:** 51kDa as determined by SDS-PAGE reducing conditions.

**[ USAGE ]**

Reconstitute in 10mM PBS (pH7.4) to a concentration of 0.1-1.0 mg/mL. Do not vortex.

**[ STORAGE AND STABILITY ]**

**Storage:** Avoid repeated freeze/thaw cycles.

Store at 2-8°C for one month.

Aliquot and store at -80°C for 12 months.

**Stability Test:** The thermal stability is described by the loss rate. The loss rate was determined by accelerated thermal degradation test, that is, incubate the protein at 37°C for 48h, and no obvious degradation and precipitation were observed. The loss rate is less than 5% within the expiration date under appropriate storage condition.

**[ SEQUENCE ]**

				TV	TVCLTLTAKR
MARKNCLVKN	LEAVETLGST	STICSDKTGT	LTQNRMTVAH	MWFDNQIHEA	
DTTENQSGVS	FDKTSATWLA	LSRIAGLCNR	AVFQANQENL	PILKRAVAGD	
ASESALLKCI	ELCCGSVKEM	RERYTKIVEI	PFNSTNKYQL	SIHKNLNANE	
PRHLLVMKGA	PERILDRCSS	ILLHGKEQPL	DEELKDAFQN	AYLELGGLGE	
RVLGFCHLLL	PDEQFPEGFQ	FDTDEVNFPV	DNLCFIGLIS	MIDPPRAAVP	
DAVGKCRSAG	IKVIMVTGDH	PITAKAIAKG	VGIISEGNET	VEDIAARLNI	
PVSQVNPRDA	KACVVHGSDL	KDMTSEQLDD	ILKYHTEIVF	ARTSPQKLI	
IVEGCQRQGA	IVAVTGDGVN	DSPALKKADI	GVAMGIAGSD	VSKQAADMIL	
LDDNFASIVT	GVEEGRILFD	NL			

**[ IDENTIFICATION ]**

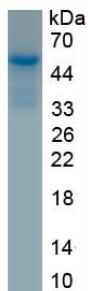


Figure. SDS-PAGE

**[ IMPORTANT NOTE ]**

The kit is designed for research use only, we will not be responsible for any issue if the kit was used in clinical diagnostic or any other procedures.