



CSI290Ra01

Primary Rabbit Olfactory Bulb Neuron Cells (OBNC)

Organism Species: *Oryctolagus cuniculus* (Rabbit)

*Instruction manual*

FOR RESEARCH USE ONLY

NOT FOR USE IN CLINICAL DIAGNOSTIC PROCEDURES

1st Edition (Revised in Sep, 2024)

## [ DESCRIPTION ]

**Cell Type:** Neuron Cell

**Synonyms:** TGNC

**Strain:** New Zealand white rabbit

**Age:** Fetus

**Tissue Source:** Olfactory Bulb

**Disease:** Normal

**Size:**  $>5 \times 10^5$  cell/vial

## [ PROPERTIES ]

**Cell activity:**  $>85\%$  (Viability by Trypan Blue Exclusion).

**Formulation:** Frozen 1 mL or T25 flask.

**Biosafety:** Negative for HIV-1, HBV, HCV, mycoplasma, bacteria, yeast and fungi.

**Applications:** For research use only. It is not approved for human or animal use, or for application in clinical diagnostic procedures.

**Growth Properties:** Adherent

## [ CONTENTS ]

**Form & Buffer:** Supplied as solution form in frozen stock solution, containing 90% FBS+10% DMSO.

## [ USAGE ]

Upon receiving the cells in a T-25 flask at room temperature, immediately transfer the cells to 37°C, 5% incubator; the cells in vials, directly and immediately transfer the cells from dry ice to liquid nitrogen.

### **Culture conditions:**

Special culture medium for neuronal cell:

Neurobasal-A Medium+B-27 Supplement (50X)+1%Penicillin-Streptomycin Solution

Temperature: 37°C

Condition: 95% air, 5% carbon dioxide

### **Cell recovery:**

After receiving the cells, shake at 37°C in a water bath until completely dissolved, transfer to a 15 ml centrifuge tube, add 3-5 times complete culture solution, 1000 rpm for 5 min, discard the supernatant, and place in a T25 flask for culture.



**Cell passage:**

Further culture of Rabbit OBNC are guaranteed under the conditions we provide; however, Rabbit OBNC are not recommended for expansion or long-term cultures because cells do not proliferate in culture.

**[ Shipping ]**

Dry ice.

**[ STORAGE ]**

Upon receiving, directly and immediately transfer the cells from dry ice to liquid nitrogen and keep the cells in liquid nitrogen until they are needed for experiments.

**[ IMPORTANTNOTE ]**

1. Primary Rabbit Olfactory Bulb Neuron Cells are not recommended for expanding or long-term cultures since the cells do not proliferate in culture.
2. The cell is for research use only, and we will not be responsible for any issue if the cell was used in clinical diagnostic or any other procedures.

**[ Figure ]**

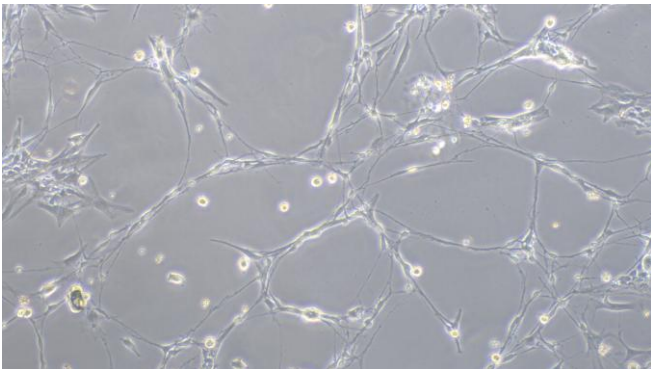


Figure 1

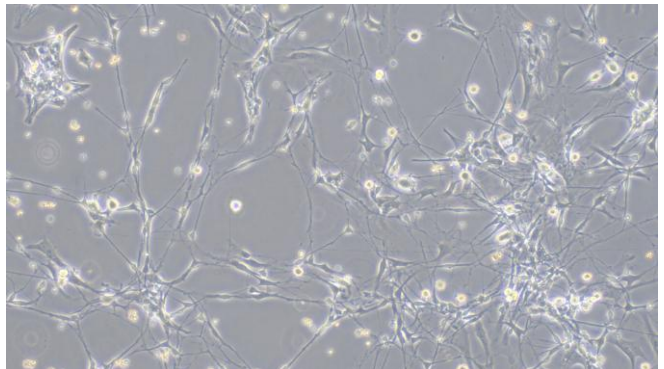


Figure 2

Figure 1 Morphology of Rabbit Olfactory Bulb Neuron Cells (Optical microscope,×100)

Figure 2 Morphology of Rabbit Olfactory Bulb Neuron Cells (Optical microscope,×100)