



CSI038Ca01

Primary Canine Schwann Cells (SC)

Organism Species: *Canis familiaris*; Canine (Dog)

*Instruction manual*

FOR RESEARCH USE ONLY

NOT FOR USE IN CLINICAL DIAGNOSTIC PROCEDURES

1st Edition (Revised in Dec, 2024)

## [ DESCRIPTION ]

**Cell Type:** Neuroglia cell

**Synonyms:** SC

**Strain:** Beagle

**Age:** 1-2 Weeks

**Tissue Source:** Sciatic nerve

**Disease:** Normal

**Size:**  $>5 \times 10^5$  cell/vial

## [ PROPERTIES ]

**Cell activity:**  $>85\%$  (Viability by Trypan Blue Exclusion).

**Formulation:** Frozen 1 mL or T25 flask.

**Biosafety:** Negative for HIV-1, HBV, HCV, mycoplasma, bacteria, yeast and fungi.

**Applications:** For research use only. It is not approved for human or animal use, or for application in clinical diagnostic procedures.

**Growth Properties:** Adherent

## [ CONTENTS ]

**Form & Buffer:** Supplied as solution form in frozen stock solution, containing 90% FBS+10% DMSO.

## [ USAGE ]

Upon receiving the cells in a T-25 flask at room temperature, immediately transfer the cells to 37°C, 5% CO<sub>2</sub> incubator; the cells in vials, directly and immediately transfer the cells from dry ice to liquid nitrogen.

### **Culture conditions:**

Special culture medium for Canine Schwann Cell:

Neurobasal-A Medium+B-27 Supplement (50x)+1%Penicillin-Streptomycin Solution

Temperature: 37°C

Condition: 95% air, 5% carbon dioxide

### **Cell recovery:**

After receiving the cells, shake at 37°C in a water bath until completely dissolved, transfer to a 15 ml centrifuge tube, add 3-5 times complete culture solution, 1000 rpm for 5 min, discard the supernatant, and place in a T25 flask for culture.



## Cell passage:

1. Cell passage when cell growth at 85-95%.
2. Discard the medium and wash with PBS 1-2 times.
3. Add 1 ml of Trypsin at 37°C, observe the cell under the microscope. If the cells are retracted and rounded, pat the culture flask to let the cells fall off. Stop digestion by adding 2 ml of complete medium containing 10% serum. Make it a single cell suspension.
4. Add the fresh medium to resuspend the cells. Unless otherwise stated, the recommended ratio of primary cells is 1/2.

## [ Shipping ]

Dry ice.

## [ STORAGE ]

Upon receiving, directly and immediately transfer the cells from dry ice to liquid nitrogen and keep the cells in liquid nitrogen until they are needed for experiments.

## [ IMPORTANT NOTE ]

1. The cultured cycle of Primary Canine Schwann Cells is limited in *vitro*. It is suggested that after cell resuscitation, the special growth medium and correct operation method recommended by us should be used for culture, and it should be used for follow-up experiments as soon as possible.
2. It is recommended that culture bottles be coated with Collagen type I from rat tail, and the concentration of rat tail collagen coating is 0.1mg/ml.
3. The cell is for research use only, and we will not be responsible for any issue if the cell was used in clinical diagnostic or any other procedures.

## [ Figure ]

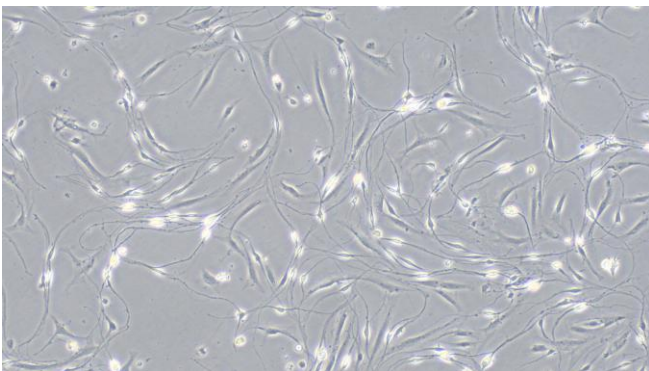


Figure 1

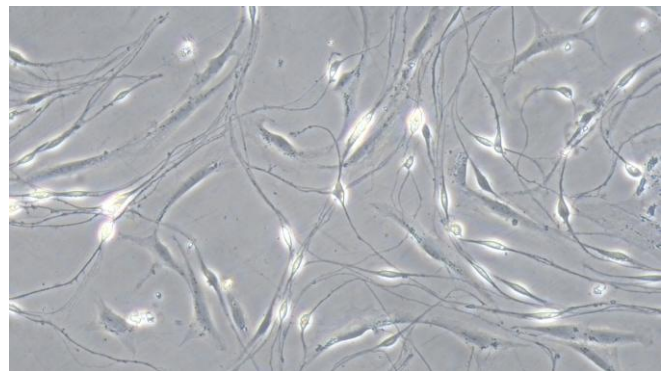


Figure 2

Figure 1 Morphology of Canine Schwann Cells (Optical microscope,×100)

Figure 2 Morphology of Canine Schwann Cells (Optical microscope,×200)