

PAD352Hu02

Polyclonal Antibody to Hexokinase 2 (HK2)

Organism Species: *Homo sapiens* (Human)

Instruction manual

FOR RESEARCH USE ONLY

NOT FOR USE IN CLINICAL DIAGNOSTIC PROCEDURES

13th Edition (Revised in Aug, 2023)

[PROPERTIES]

Source: Polyclonal antibody preparation

Host: Rabbit

Purification: Antigen-specific affinity chromatography followed by Protein A affinity chromatography

Traits: Liquid

Concentration: 0.39mg/mL

UOM: 10µg(26µL)

Cross Reactivity: Mouse

Applications: WB; IHC; ICC; IP; FCM

[IMMUNOGEN]

Immunogen: Recombinant HK2 (Ala469~Asp669) expressed in *E.coli*

Accession No.: RPD352Hu02

[APPLICATIONS]

Western blotting: 0.01-5?g/mL;

Immunohistochemistry: 5-20?g/mL;

Immunocytochemistry: 5-20?g/mL;

Flow cytometry:20?g/mL;

Optimal working dilutions must be determined by end user.

[FORMULATION]

Form & Buffer: Supplied as solution form in PBS, pH7.4, containing 0.02% NaN₃, 50% glycerol.

[STORAGE AND STABILITY]

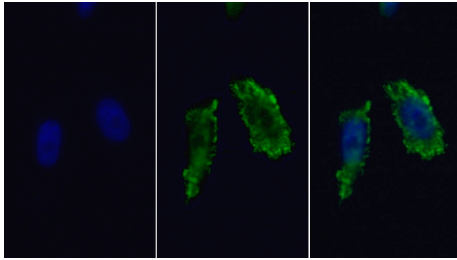
Storage: Avoid repeated freeze/thaw cycles.

Store at 4°C for frequent use.

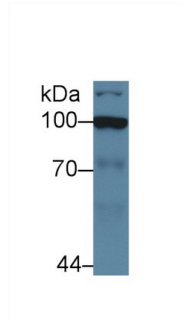
Aliquot and store at -20°C for 24 months.

Stability Test: The thermal stability is described by the loss rate. The loss rate was determined by accelerated thermal degradation test, that is, incubate the protein at 37°C for 48h, and no obvious degradation and precipitation were observed. The loss rate is less than 5% within the expiration date under appropriate storage condition.

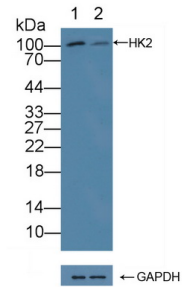
[IDENTIFICATION]



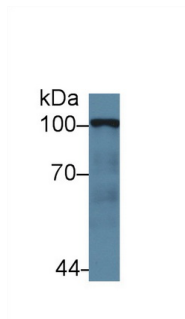
FITC staining on IF; Sample: Human HepG2 cell; Primary Ab: 10µg/ml Rabbit Anti-Human HK2 Antibody
 Second Ab: 2µg/ml FITC-Linked Caprine Anti-Rabbit IgG Polyclonal Antibody (Catalog: SAA544Rb18)



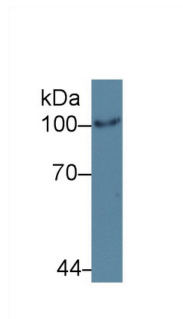
Western Blot; Sample: Human Jurkat cell lysate;
 Primary Ab: 5µg/ml Rabbit Anti-Human HK2 Antibody
 Second Ab: 0.2µg/mL HRP-Linked Caprine Anti-Rabbit IgG Polyclonal Antibody (Catalog: SAA544Rb19)



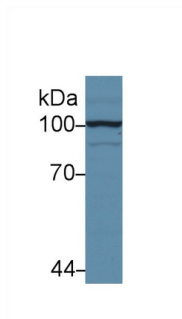
Knockout Varification:
 Lane 1: Wild-type MCF7 cell lysate;
 Lane 2: HK2 knockout MCF7 cell lysate;
 Predicted MW: 102kd
 Observed MW: 102kd
 Primary Ab: 5µg/ml Rabbit Anti-Human HK2 Antibody
 Second Ab: 0.2µg/mL HRP-Linked Caprine Anti-Rabbit IgG Polyclonal Antibody (Catalog: SAA544Rb19)



Western Blot; Sample: Human MCF7 cell lysate;
 Primary Ab: 5µg/ml Rabbit Anti-Human



Western Blot; Sample: Human A431 cell lysate;
 Primary Ab: 5µg/ml Rabbit Anti-Human



Western Blot; Sample: Human Hela cell lysate;
 Primary Ab: 5µg/ml Rabbit Anti-Human

HK2 Antibody

Second Ab: 0.2µg/mL HRP-Linked
Caprine Anti-Rabbit IgG Polyclonal
Antibody
(Catalog: SAA544Rb19)

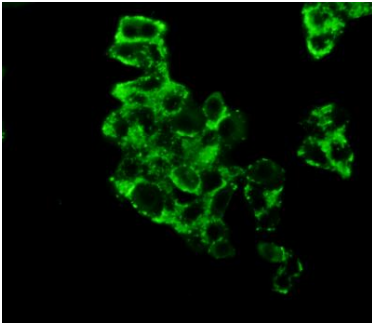
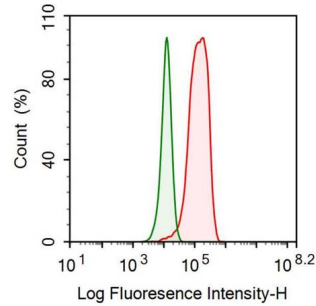


Figure: FITC staining on IHC-P;
Sample: MCF7 cells.

HK2 Antibody

Second Ab: 0.2µg/mL HRP-Linked
Caprine Anti-Rabbit IgG Polyclonal
Antibody
(Catalog: SAA544Rb19)



Human HepG2 cell was fixed with 2% paraformaldehyde (10 min) , permeabilised with 0.1% BSA-Triton X-100, then stained with 20µg/ml rabbit Anti-human HK2 Polyclonal Antibody (Catalog PAD352Hu02, red histogram) or Isotype control antibody (Catalog IS067-Rb01, green histogram), followed by 1µg/ml FITC-conjugated Anti-rabbit IgG Secondary Antibody (Catalog SAA544Rb18).

HK2 Antibody

Second Ab: 0.2µg/mL HRP-Linked
Caprine Anti-Rabbit IgG Polyclonal
Antibody
(Catalog: SAA544Rb19)

[IMPORTANT NOTE]

The kit is designed for research use only, we will not be responsible for any issue if the kit was used in clinical diagnostic or any other procedures.