

**PAG979Hu01**

**Polyclonal Antibody to Glutaredoxin 3 (GLRX3)**

**Organism Species: *Homo sapiens (Human)***

***Instruction manual***

FOR RESEARCH USE ONLY

NOT FOR USE IN CLINICAL DIAGNOSTIC PROCEDURES

---

13th Edition (Revised in Aug, 2023)

## **[ PROPERTIES ]**

**Source:** Polyclonal antibody preparation

**Host:** Rabbit

**Purification:** Antigen-specific affinity chromatography followed by Protein A affinity chromatography

**Traits:** Liquid

**Concentration:** 0.5mg/mL

**UOM:** 100µL

**Cross Reactivity:** Mouse;Rat;Porcine.

**Applications:** WB; IHC; ICC/IF

## **[ IMMUNOGEN ]**

**Immunogen:** Recombinant GLRX3 (Val10~Ser117) expressed in *E.coli*

**Accession No.:** RPG979Hu01

## **[ APPLICATIONS ]**

Western blotting: 0.01-2µg/mL;

Immunohistochemistry: 5-20µg/mL;

Immunocytochemistry: 5-20µg/mL;

Optimal working dilutions must be determined by end user.

## **[ FORMULATION ]**

**Form & Buffer:** Supplied as solution form in PBS, pH7.4, containing 0.02% NaN<sub>3</sub>, 50% glycerol.

## **[ STORAGE AND STABILITY ]**

**Storage:** Avoid repeated freeze/thaw cycles.

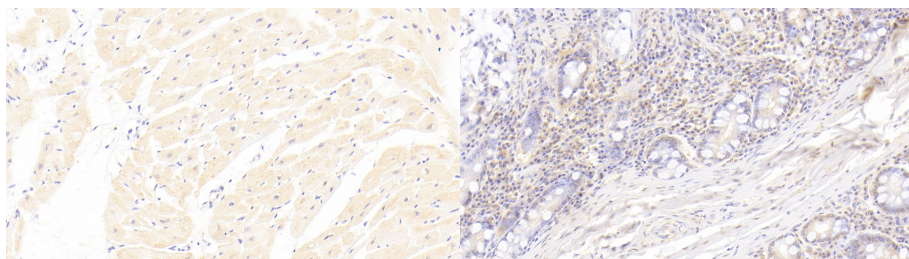
Store at 4°C for frequent use.

Aliquot and store at -20°C for 24 months.

**Stability Test:** The thermal stability is described by the loss rate. The loss rate was determined by accelerated thermal degradation test, that is, incubate the protein at 37°C for 48h, and no

obvious degradation and precipitation were observed. The loss rate is less than 5% within the expiration date under appropriate storage condition.

## [ IDENTIFICATION ]

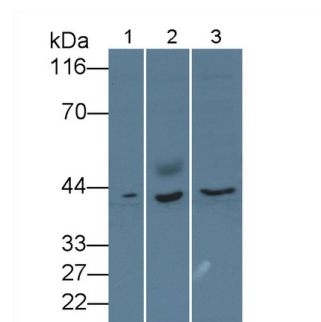


DAB staining on IHC-P; Samples:

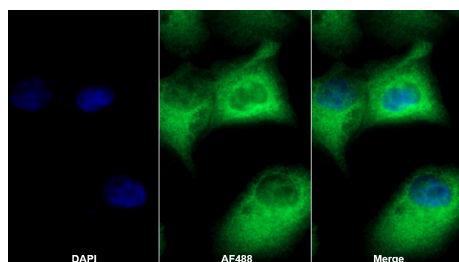
Human Cardiac Muscle Tissue; Primary  
Ab: 20?g/ml Rabbit Anti-Human GLRX3  
Antibody Second Ab: 2μg/mL HRP-  
Linked Caprine Anti-Rabbit IgG  
Polyclonal Antibody (Catalog:  
SAA544Rb19)

DAB staining on IHC-P;

Samples: Human Small intestine  
Tissue;  
Primary Ab: 20?g/ml Rabbit Anti-  
Human GLRX3 Antibody  
Second Ab: 2μg/mL HRP-Linked  
Caprine Anti-Rabbit IgG Polyclonal  
Antibody  
(Catalog: SAA544Rb19)



Western Blot; Sample: Lane1: Jurkat  
cell lysate; Lane2: Rat Testis lysate;  
Lane3: Mouse Testis lysate  
Primary Ab: 0.2μg/ml Rabbit Anti-  
Human GLRX3 Antibody  
Second Ab: 0.2μg/mL HRP-Linked  
Caprine Anti-Rabbit IgG Polyclonal  
Antibody  
(Catalog: SAA544Rb19)



AF488 staining on IF;

Sample: A549 cell

Primary Ab: 20μg/ml Rabbit Anti-  
Human GLRX3 Antibody  
Second Ab: 2?g/ml AF488-Linked  
Caprine Anti-Rabbit IgG Polyclonal  
Antibody  
(Catalog: SAA544Rb11)

**[ IMPORTANT NOTE ]**

The kit is designed for research use only, we will not be responsible for any issue if the kit was used in clinical diagnostic or any other procedures.