

PAA109Hu01

Polyclonal Antibody to Creatine Kinase, Muscle (CKM)

Organism Species: *Homo sapiens* (Human)

Instruction manual

FOR RESEARCH USE ONLY

NOT FOR USE IN CLINICAL DIAGNOSTIC PROCEDURES

13th Edition (Revised in Aug, 2023)

[PROPERTIES]

Source: Polyclonal antibody preparation

Host: Rabbit

Purification: Antigen-specific affinity chromatography followed by Protein A affinity chromatography

Traits: Liquid

Concentration: 0.5mg/mL

UOM: 100μL

Cross Reactivity: Mouse;Rat;Canine

Applications: WB; IHC

[IMMUNOGEN]

Immunogen: Recombinant CKM (Lys11~Leu367) expressed in *E.coli*

Accession No.: RPA109Hu01

[APPLICATIONS]

Western blotting: 0.01-2μg/mL;

Immunohistochemistry: 5-20μg/mL;

Optimal working dilutions must be determined by end user.

[FORMULATION]

Form & Buffer: Supplied as solution form in 0.01M PBS, pH7.4, containing 0.05% Proclin-300, 50% glycerol.

[STORAGE AND STABILITY]

Storage: Avoid repeated freeze/thaw cycles.

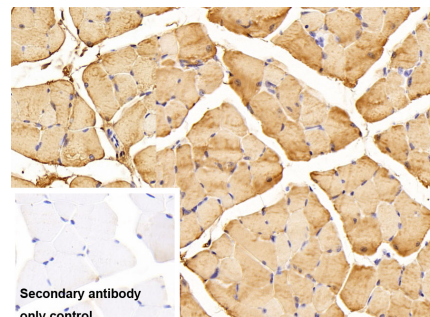
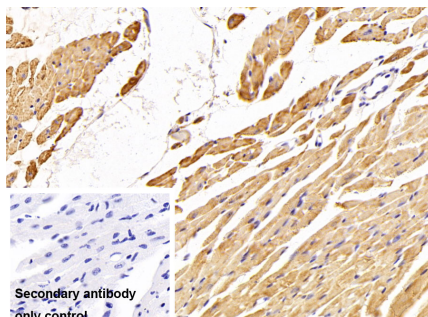
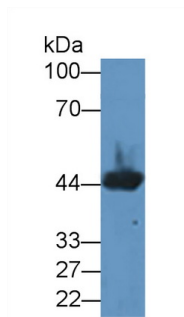
Store at 4°C for frequent use.

Aliquot and store at -20°C for 24 months.

Stability Test: The thermal stability is described by the loss rate. The loss rate was determined by accelerated thermal degradation test, that is, incubate the protein at 37°C for 48h, and no obvious degradation and precipitation were observed. The loss rate is less than 5% within the

expiration date under appropriate storage condition.

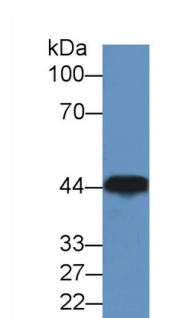
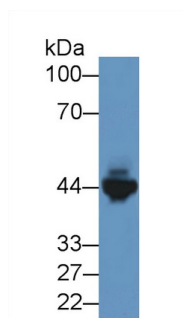
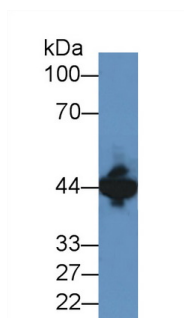
[IDENTIFICATION]



Western Blot; Sample: Canine Heart lysate; Primary Ab: 2 μ g/ml Rabbit Anti-Human CKM Antibody Second Ab: 0.2 μ g/mL HRP-Linked Caprine Anti-Rabbit IgG Polyclonal Antibody (Catalog: SAA544Rb19)

DAB staining on IHC-P; Sample: Mouse Cardiac Muscle Tissue Primary Ab: 20 μ g/ml Rabbit Anti-Human CKM Antibody Control: Used PBS instead of primary antibody Second Ab: 2 μ g/ml HRP-Linked Caprine Anti-Rabbit IgG Polyclonal Antibody (Catalog: SAA544Rb19)

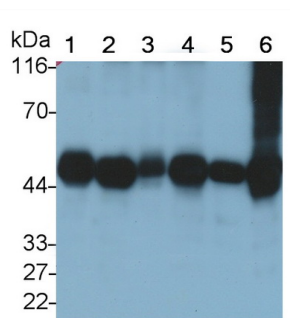
DAB staining on IHC-P; Sample: Mouse Skeletal muscle Tissue Primary Ab: 20 μ g/ml Rabbit Anti-Human CKM Antibody Control: Used PBS instead of primary antibody Second Ab: 2 μ g/ml HRP-Linked Caprine Anti-Rabbit IgG Polyclonal Antibody (Catalog: SAA544Rb19)



Western Blot; Sample: Mouse Brain lysate; Primary Ab: 2 μ g/ml Rabbit Anti-Human CKM Antibody Second Ab: 0.2 μ g/mL HRP-Linked Caprine Anti-Rabbit IgG Polyclonal Antibody (Catalog: SAA544Rb19)

Western Blot; Sample: Mouse Heart lysate; Primary Ab: 2 μ g/ml Rabbit Anti-Human CKM Antibody Second Ab: 0.2 μ g/mL HRP-Linked Caprine Anti-Rabbit IgG Polyclonal Antibody (Catalog: SAA544Rb19)

Western Blot; Sample: Canine Brain lysate; Primary Ab: 2 μ g/ml Rabbit Anti-Human CKM Antibody Second Ab: 0.2 μ g/mL HRP-Linked Caprine Anti-Rabbit IgG Polyclonal Antibody (Catalog: SAA544Rb19)



Western Blot; Sample: Lane1: Porcine

Heart lysate; Lane2: Porcine Skeletal

muscle lysate; Lane3: Rat Heart lysate;

Lane4: Rat Skeletal muscle lysate;

Lane5: Mouse Heart lysate; Lane6:

Mouse Skeletal muscle lysate

Primary Ab: 0.02 μ g/ml Rabbit Anti-

Human CKM Antibody

Second Ab: 0.2 μ g/mL HRP-Linked

Caprine Anti-Rabbit IgG Polyclonal

Antibody

(Catalog: SAA544Rb19)

[IMPORTANT NOTE]

The kit is designed for research use only, we will not be responsible for any issue if the kit was used in clinical diagnostic or any other procedures.