

**PAC220Hu01**

**Polyclonal Antibody to Bleomycin Hydrolase (BLMH)**

**Organism Species: *Homo sapiens (Human)***

***Instruction manual***

FOR RESEARCH USE ONLY

NOT FOR USE IN CLINICAL DIAGNOSTIC PROCEDURES

---

13th Edition (Revised in Aug, 2023)

**[ PROPERTIES ]**

**Source:** Polyclonal antibody preparation

**Host:** Rabbit

**Purification:** Antigen-specific affinity chromatography followed by Protein A affinity chromatography

**Traits:** Liquid

**Concentration:** 0.5mg/mL

**UOM:** 100µL

**Cross Reactivity:** Mouse;Rat

**Applications:** WB; IHC; ICC; IP; FCM

**[ IMMUNOGEN ]**

**Immunogen:** Recombinant BLMH (Met213~Trp447 (Accession # Q13867)) expressed in *E.coli*

**Accession No.:** RPC220Hu01

**[ APPLICATIONS ]**

Western blotting: 0.01-3?g/mL;

Immunohistochemistry: 5-20?g/mL;

Immunocytochemistry: 5-20?g/mL;

Flow cytometry: 20?g/mL;

Optimal working dilutions must be determined by end user.

**[ FORMULATION ]**

**Form & Buffer:** Supplied as solution form in 0.01M PBS, pH7.4, containing 0.05% Proclin-300, 50% glycerol.

**[ STORAGE AND STABILITY ]**

**Storage:** Avoid repeated freeze/thaw cycles.

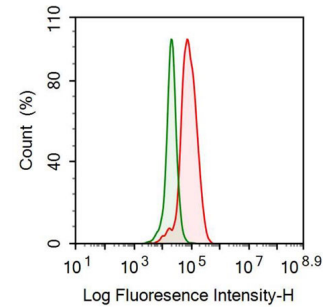
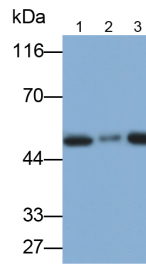
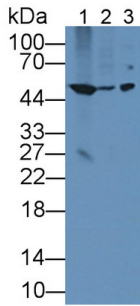
Store at 4°C for frequent use.

Aliquot and store at -20°C for 24 months.

**Stability Test:** The thermal stability is described by the loss rate. The loss rate was determined

by accelerated thermal degradation test, that is, incubate the protein at 37°C for 48h, and no obvious degradation and precipitation were observed. The loss rate is less than 5% within the expiration date under appropriate storage condition.

**[ IDENTIFICATION ]**



Western Blot; Sample: Lane1: Rat Spleen lysate; Lane2: Rat Skeletal muscle lysate; Lane3: Human K562 cell lysate; Lane3: Mouse Cerebrum lysate  
 Primary Ab: 3µg/mL Rabbit Anti-Human BLMH Antibody  
 Second Ab: 0.2µg/mL HRP-Linked Caprine Anti-Rabbit IgG Polyclonal Antibody  
 (Catalog: SAA544Rb19)

Western Blot; Samples: Lane1: K562 cell lysate; Lane2: Rat Cerebrum cell lysate; Lane3: Mouse Cerebrum lysate;  
 Primary Ab: 0.3µg/ml Rabbit Anti-Human BLMH Antibody  
 Second Ab: 0.2µg/ml HRP-Linked Caprine Anti-Rabbit IgG Polyclonal Antibody  
 (Catalog: SAA544Rb19)

Human NB-4 cell line was fixed with 2% paraformaldehyde (10 min) , permeabilised with 0.1% BSA-Triton X-100, then stained with 20µg/ml rabbit Anti-human BLMH Polyclonal Antibody (Catalog PAC220Hu01, red histogram) or Isotype control antibody (Catalog IS067-Rb01, green histogram), followed by 1µg/ml FITC-conjugated Anti-rabbit IgG Secondary Antibody (Catalog SAA544Rb18).

**[ IMPORTANT NOTE ]**

The kit is designed for research use only, we will not be responsible for any issue if the kit was used in clinical diagnostic or any other procedures.