

PAJ636Mu01

Polyclonal Antibody to Acidic Nuclear Phosphoprotein 32 Family, Member A (ANP32A)

Organism Species: *Mus musculus* (Mouse)

Instruction manual

FOR RESEARCH USE ONLY

NOT FOR USE IN CLINICAL DIAGNOSTIC PROCEDURES

13th Edition (Revised in Aug, 2023)

[PROPERTIES]

Source: Polyclonal antibody preparation

Host: Rabbit

Purification: Antigen-specific affinity chromatography followed by Protein A affinity chromatography

Traits: Liquid

Concentration: 0.5mg/mL

UOM: 100µL

Cross Reactivity: Human

Applications: WB; IHC

[IMMUNOGEN]

Immunogen: Recombinant ANP32A (Glu2-Asp247) expressed in *E.coli*

Accession No.: RPJ636Mu01

[APPLICATIONS]

Western blotting: 0.01-2µg/mL;

Immunohistochemistry: 5-20µg/mL;

Optimal working dilutions must be determined by end user.

[FORMULATION]

Form & Buffer: Supplied as solution form in 0.01M PBS, pH7.4, containing 0.05% Proclin-300, 50% glycerol.

[STORAGE AND STABILITY]

Storage: Avoid repeated freeze/thaw cycles.

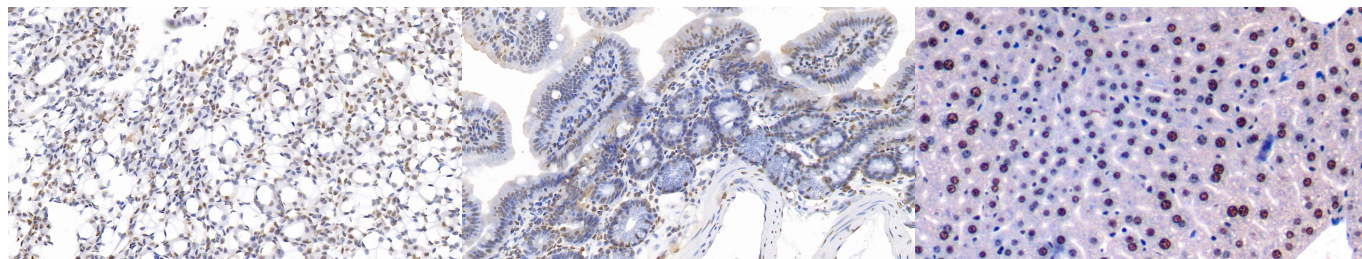
Store at 4°C for frequent use.

Aliquot and store at -20°C for 24 months.

Stability Test: The thermal stability is described by the loss rate. The loss rate was determined by accelerated thermal degradation test, that is, incubate the protein at 37°C for 48h, and no obvious degradation and precipitation were observed. The loss rate is less than 5% within the

expiration date under appropriate storage condition.

[IDENTIFICATION]



DAB staining on IHC-P;

Samples: Mouse Kidney Tissue;

Primary Ab: 10µg/ml Rabbit Anti-Mouse

ANP32A Antibody

Second Ab: 2µg/mL HRP-Linked

Caprine Anti-Rabbit IgG Polyclonal

Antibody

(Catalog: SAA544Rb19)

DAB staining on IHC-P;

Samples: Mouse Colon Tissue;

Primary Ab: 10µg/ml Rabbit Anti-Mouse

ANP32A Antibody

Second Ab: 2µg/mL HRP-Linked

Caprine Anti-Rabbit IgG Polyclonal

Antibody

(Catalog: SAA544Rb19)

DAB staining on IHC-P;

Samples: Mouse Liver Tissue;

Primary Ab: 10µg/ml Rabbit Anti-Mouse

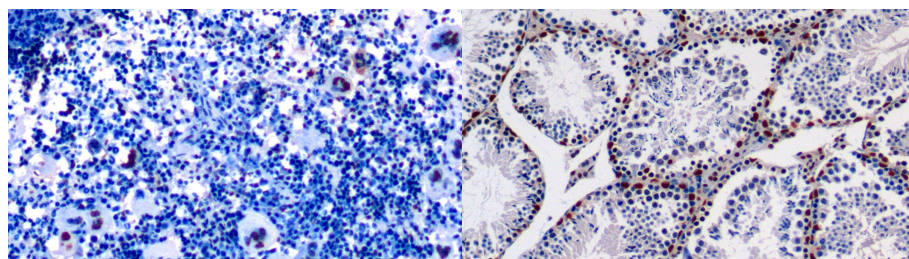
ANP32A Antibody

Second Ab: 2µg/mL HRP-Linked

Caprine Anti-Rabbit IgG Polyclonal

Antibody

(Catalog: SAA544Rb19)



DAB staining on IHC-P;

Samples: Mouse Spleen Tissue;

Primary Ab: 10µg/ml Rabbit Anti-Mouse

ANP32A Antibody

Second Ab: 2µg/mL HRP-Linked

Caprine Anti-Rabbit IgG Polyclonal

Antibody

(Catalog: SAA544Rb19)

DAB staining on IHC-P;

Samples: Mouse Testis Tissue;

Primary Ab: 10µg/ml Rabbit Anti-Mouse

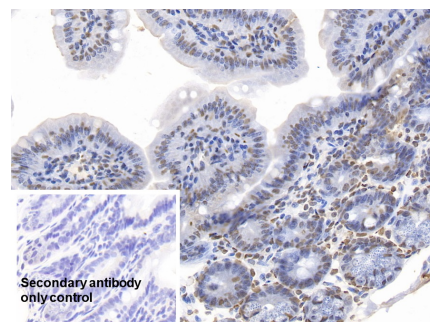
ANP32A Antibody

Second Ab: 2µg/mL HRP-Linked

Caprine Anti-Rabbit IgG Polyclonal

Antibody

(Catalog: SAA544Rb19)



DAB staining on IHC-P;

Sample: Mouse Colon Tissue

Primary Ab: 10µg/ml Rabbit Anti-Mouse

ANP32A Antibody

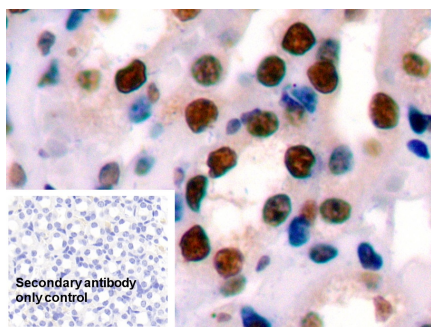
Control: Used PBS instead of primary
antibody

Second Ab: 2µg/ml HRP-Linked

Caprine Anti-Rabbit IgG Polyclonal

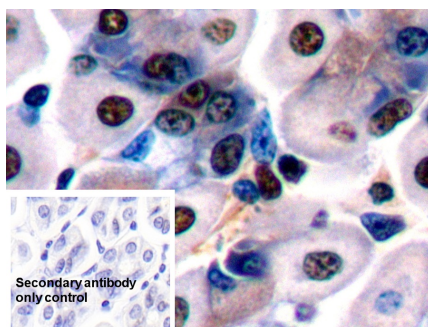
Antibody

(Catalog: SAA544Rb19)



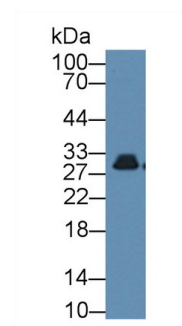
DAB staining on IHC-P;

Sample: Mouse Kidney Tissue



DAB staining on IHC-P;

Sample: Mouse Stomach Tissue



Western Blot; Sample: Mouse

Cerebrum lysate

Primary Ab: 10µg/ml Rabbit Anti-Mouse ANP32A Antibody

Control: Used PBS instead of primary antibody

Second Ab: 2µg/ml HRP-Linked

Caprine Anti-Rabbit IgG Polyclonal Antibody

(Catalog: SAA544Rb19)

Primary Ab: 10µg/ml Rabbit Anti-Mouse ANP32A Antibody

Control: Used PBS instead of primary antibody

Second Ab: 2µg/ml HRP-Linked

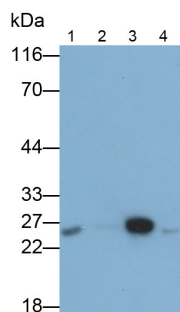
Caprine Anti-Rabbit IgG Polyclonal Antibody

(Catalog: SAA544Rb19)

Primary Ab: 2µg/mL Rabbit Anti-Mouse ANP32A Antibody

Second Ab: 0.2µg/mL HRP-Linked Caprine Anti-Rabbit IgG Polyclonal Antibody

(Catalog: SAA544Rb19)



Western Blot; Samples: Lane1: Mouse

Cerebrum lysate; Lane2: Mouse Lung

lysate; Lane3: Hela cell lysate; Lane4:

Raji cell lysate;

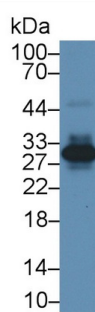
Primary Ab: 0.1µg/ml Rabbit Anti-

Mouse ANP32A Antibody

Second Ab: 0.2µg/ml HRP-Linked

Caprine Anti-Rabbit IgG Polyclonal Antibody

(Catalog: SAA544Rb19)



Western Blot; Sample: Mouse Lung

lysate;

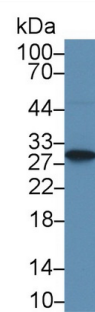
Primary Ab: 1µg/ml Rabbit Anti-Mouse

ANP32A Antibody

Second Ab: 0.2µg/mL HRP-Linked

Caprine Anti-Rabbit IgG Polyclonal Antibody

(Catalog: SAA544Rb19)



Western Blot; Sample: Human Hela cell

lysate;

Primary Ab: 1µg/ml Rabbit Anti-Mouse

ANP32A Antibody

Second Ab: 0.2µg/mL HRP-Linked

Caprine Anti-Rabbit IgG Polyclonal Antibody

(Catalog: SAA544Rb19)

[IMPORTANT NOTE]

The kit is designed for research use only, we will not be responsible for any issue if the kit was used in clinical diagnostic or any other procedures.