

PAD659Hu01

Polyclonal Antibody to Acetyl Coenzyme A Acyltransferase 2 (ACAA2)

Organism Species: *Homo sapiens (Human)*

Instruction manual

FOR RESEARCH USE ONLY

NOT FOR USE IN CLINICAL DIAGNOSTIC PROCEDURES

13th Edition (Revised in Aug, 2023)

[PROPERTIES]

Source: Polyclonal antibody preparation

Host: Rabbit

Purification: Antigen-specific affinity chromatography followed by Protein A affinity chromatography

Traits: Liquid

Concentration: 0.5mg/mL

UOM: 100µL

Cross Reactivity: Mouse

Applications: WB; IHC; ICC/IF; FCM

[IMMUNOGEN]

Immunogen: Recombinant ACAA2 (Arg90~Ala397) expressed in *E.coli*

Accession No.: RPD659Hu01

[APPLICATIONS]

Western blotting: 0.01-2?g/mL;

Immunohistochemistry: 5-20?g/mL;

Immunocytochemistry: 5-20?g/mL;

Flow cytometry:20?g/mL;

Optimal working dilutions must be determined by end user.

[FORMULATION]

Form & Buffer: Supplied as solution form in 0.01M PBS, pH7.4, containing 0.05% Proclin-300, 50% glycerol.

[STORAGE AND STABILITY]

Storage: Avoid repeated freeze/thaw cycles.

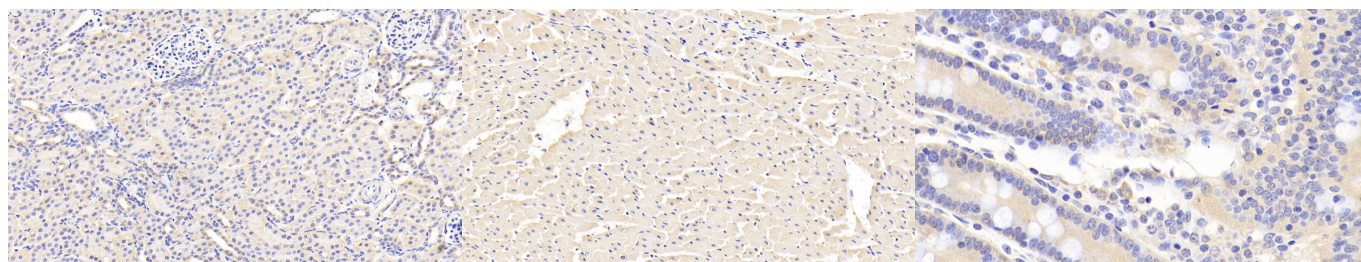
Store at 4°C for frequent use.

Aliquot and store at -20°C for 24 months.

Stability Test: The thermal stability is described by the loss rate. The loss rate was determined

by accelerated thermal degradation test, that is, incubate the protein at 37°C for 48h, and no obvious degradation and precipitation were observed. The loss rate is less than 5% within the expiration date under appropriate storage condition.

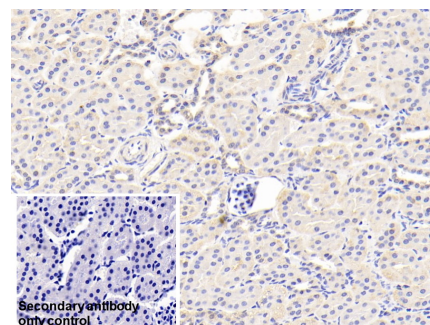
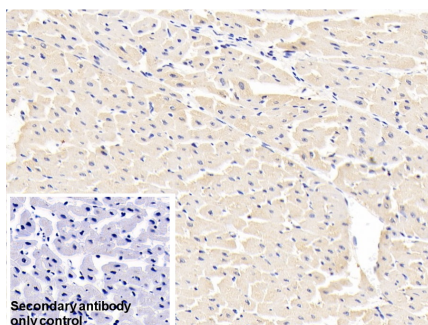
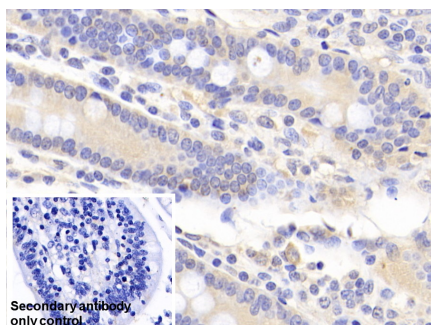
[IDENTIFICATION]



DAB staining on IHC-P; Samples:
Human Kidney Tissue; Primary Ab:
20?g/ml Rabbit Anti-Human ACAA2
Antibody Second Ab: 2µg/mL HRP-
Linked Caprine Anti-Rabbit IgG
Polyclonal Antibody (Catalog:
SAA544Rb19)

DAB staining on IHC-P;
Samples: Human Cardiac Muscle
Tissue;
Primary Ab: 20?g/ml Rabbit Anti-
Human ACAA2 Antibody
Second Ab: 2µg/mL HRP-Linked
Caprine Anti-Rabbit IgG Polyclonal
Antibody
(Catalog: SAA544Rb19)

DAB staining on IHC-P;
Samples: Human Small intestine
Tissue;
Primary Ab: 20?g/ml Rabbit Anti-
Human ACAA2 Antibody
Second Ab: 2µg/mL HRP-Linked
Caprine Anti-Rabbit IgG Polyclonal
Antibody
(Catalog: SAA544Rb19)

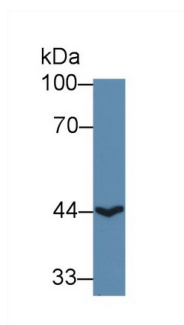


DAB staining on IHC-P;
Sample: Human Small intestine Tissue
Primary Ab: 20µg/ml Rabbit Anti-
Human ACAA2 Antibody
Control: Used PBS instead of primary
antibody
Second Ab: 2µg/ml HRP-Linked
Caprine Anti-Rabbit IgG Polyclonal

DAB staining on IHC-P;
Sample: Human Cardiac Muscle Tissue
Primary Ab: 20µg/ml Rabbit Anti-
Human ACAA2 Antibody
Control: Used PBS instead of primary
antibody
Second Ab: 2µg/ml HRP-Linked
Caprine Anti-Rabbit IgG Polyclonal

DAB staining on IHC-P;
Sample: Human Kidney Tissue
Primary Ab: 20µg/ml Rabbit Anti-
Human ACAA2 Antibody
Control: Used PBS instead of primary
antibody
Second Ab: 2µg/ml HRP-Linked
Caprine Anti-Rabbit IgG Polyclonal

Antibody
(Catalog: SAA544Rb19)

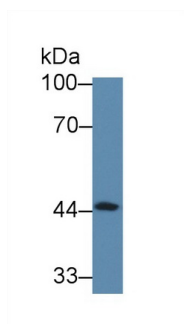


Western Blot; Sample: Human HepG2 cell lysate;

Primary Ab: 1µg/ml Rabbit Anti-Human ACAA2 Antibody

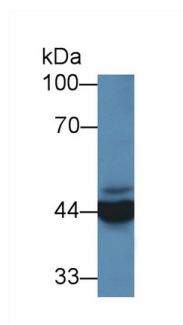
Second Ab: 0.2µg/mL HRP-Linked Caprine Anti-Rabbit IgG Polyclonal Antibody

(Catalog: SAA544Rb19)



Western Blot; Sample: Human 293T cell lysate;
Primary Ab: 1µg/ml Rabbit Anti-Human ACAA2 Antibody
Second Ab: 0.2µg/mL HRP-Linked Caprine Anti-Rabbit IgG Polyclonal Antibody
(Catalog: SAA544Rb19)

Antibody
(Catalog: SAA544Rb19)

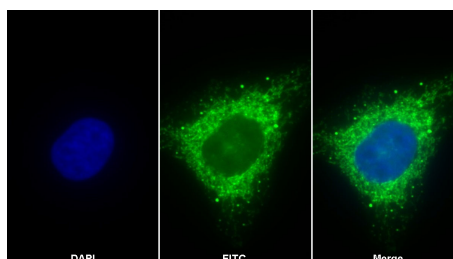


Western Blot; Sample: Mouse Liver lysate;

Primary Ab: 1µg/ml Rabbit Anti-Human ACAA2 Antibody

Second Ab: 0.2µg/mL HRP-Linked Caprine Anti-Rabbit IgG Polyclonal Antibody

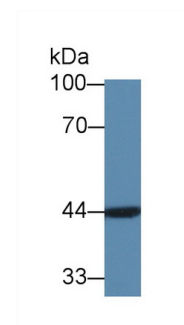
(Catalog: SAA544Rb19)



FITC staining on IF;

Sample: HepG2 cell
Primary Ab: 20µg/ml Rabbit Anti-Human ACAA2 Antibody
Second Ab: 2µg/ml FITC-Linked Caprine Anti-Rabbit IgG Polyclonal Antibody
(Catalog: SAA544Rb11)

Antibody
(Catalog: SAA544Rb19)

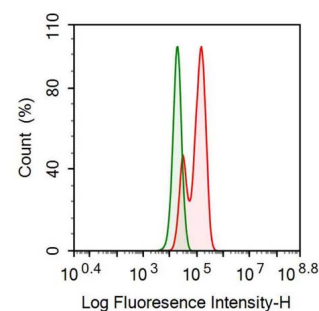


Western Blot; Sample: Human Hela cell lysate;

Primary Ab: 1µg/ml Rabbit Anti-Human ACAA2 Antibody

Second Ab: 0.2µg/mL HRP-Linked Caprine Anti-Rabbit IgG Polyclonal Antibody

(Catalog: SAA544Rb19)



Human HepG2 cell was fixed with 2% paraformaldehyde (10 min) , permeabilised with 0.1% BSA-Triton X-100, then stained with 20µg/ml rabbit Anti-human ACAA2 Polyclonal Antibody (Catalog PAD659Hu01, red histogram) or Isotype control antibody (Catalog IS067-Rb01, green histogram), followed by 1µg/ml FITC-conjugated Anti-rabbit IgG Secondary Antibody (Catalog SAA544Rb18).

[IMPORTANT NOTE]

The kit is designed for research use only, we will not be responsible for any issue if the kit was used in clinical diagnostic or any other procedures.