



NPA829Mu01 1mg
Native Immunoglobulin G3 (IgG3)
Organism Species: *Mus musculus* (Mouse)
Instruction manual

FOR RESEARCH USE ONLY
NOT FOR USE IN CLINICAL DIAGNOSTIC PROCEDURES

13th Edition (Revised in Aug, 2023)

[**PROPERTIES**]

Source: Natural Extract

Host: Mouse

Subcellular Location: Secreted.

Purity: >98% as determined by SDS-PAGE.

Purification Methods: Salt co-precipitation and ionic-Exchange chromatography.

Traits: Freeze-dried powder

Buffer Formulation: PBS, pH7.4, containing 5% Trehalose.

Original Concentration: 500µg/mL

Applications: Positive Control; Immunogen; SDS-PAGE; WB.

(May be suitable for use in other assays to be determined by the end user.)

Accurate Molecular Mass: 56&25kDa as determined by SDS-PAGE reducing conditions.

[**USAGE**]

Reconstitute in PBS (PH7.4) to a concentration of 0.1-1.0 mg/mL. Do not vortex.

[**STORAGE AND STABILITY**]

Storage: Avoid repeated freeze/thaw cycles.

Store at 2-8°C for one month.

Aliquot and store at -80°C for 12 months.

Stability Test: The thermal stability is described by the loss rate. The loss rate was determined by accelerated thermal degradation test, that is, incubate the protein at 37°C for 48h, and no obvious degradation and precipitation were observed. The loss rate is less than 5% within the expiration date under appropriate storage condition.

[IDENTIFICATION]

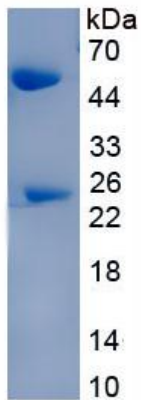


Figure . SDS-PAGE

[IMPORTANT NOTE]

The kit is designed for research use only, we will not be responsible for any issue if the kit was used in clinical diagnostic or any other procedures.