

MAA749Ge23

Monoclonal Antibody to Prostaglandin F2 Alpha (PGF2a)

Organism Species: *Pan-species (General)*

Instruction manual

FOR RESEARCH USE ONLY

NOT FOR USE IN CLINICAL DIAGNOSTIC PROCEDURES

13th Edition (Revised in Aug, 2023)

[PROPERTIES]

Source: Monoclonal antibody preparation

Host: Mouse

Antibody isotype: IgG1 Kappa

Purification: Protein A + Protein G affinity chromatography

Clone number: C3

Traits: Liquid

Concentration: 1mg/mL

UOM: 100µL

Cross Reactivity: N/A

Applications: ELISA

[IMMUNOGEN]

Immunogen: Small Molecule, PGF2a conjugated to BSA.

Accession No.: CPA749Ge11

[APPLICATIONS]

Enzyme-Linked Immune Immunosorbent: 3.44µg/mL;

Optimal working dilutions must be determined by end user.

[FORMULATION]

Form & Buffer: Supplied as solution form in 0.01M PBS, pH7.4, containing 0.05% Proclin-300, 50% glycerol.

[STORAGE AND STABILITY]

Storage: Avoid repeated freeze/thaw cycles.

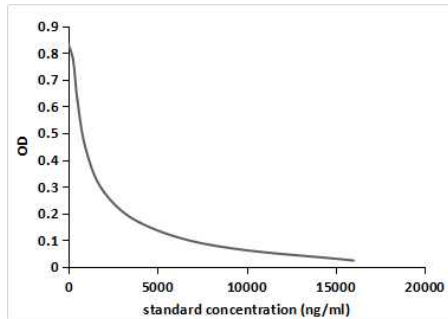
Store at 4°C for frequent use.

Aliquot and store at -20°C for 24 months.

Stability Test: The thermal stability is described by the loss rate. The loss rate was determined by accelerated thermal degradation test, that is, incubate the protein at 37°C for 48h, and no obvious degradation and precipitation were observed. The loss rate is less than 5% within the

expiration date under appropriate storage condition.

[IDENTIFICATION]



Competitive inhibition ELISA;

Coated protein: PGF2a conjugated to

OVA (Catalog:CPA749Ge21);

Standard:Series Diluted PGF2a;

Primary Ab: 3.44µg/mL Mouse Anti

PGF2a Antibody;

Second Ab: 2µg/mL HRP-Linked

Caprine Anti-mouse IgG

PolyclonalAntibody

(Catalog: SAA544Mu19)

IC50=1000ng/mL

[IMPORTANT NOTE]

The kit is designed for research use only, we will not be responsible for any issue if the kit was used in clinical diagnostic or any other procedures.