

MAV769Mi21

Monoclonal Antibody to Liraglutide (LRT)

Organism Species:

Instruction manual

FOR RESEARCH USE ONLY

NOT FOR USE IN CLINICAL DIAGNOSTIC PROCEDURES

13th Edition (Revised in Aug, 2023)

[PROPERTIES]

Source: Monoclonal antibody preparation

Host: Mouse

Antibody isotype: IgG1 Kappa

Purification: Protein A + Protein G affinity chromatography

Clone number: C2

Traits: Liquid

Concentration: 1mg/mL

UOM: 100 μ L

Cross Reactivity: N/A

Applications: ELISA

[IMMUNOGEN]

Immunogen: Small Molecule, LRT conjugated to BSA.

Accession No.: CPV769Mi11

[APPLICATIONS]

Enzyme-Linked Immune Immunosorbent: 1.07 μ g/mL;

Optimal working dilutions must be determined by end user.

[FORMULATION]

Form & Buffer: Supplied as solution form in 0.01M PBS, pH7.4, containing 0.05% Proclin-300, 50% glycerol.

[STORAGE AND STABILITY]

Storage: Avoid repeated freeze/thaw cycles.

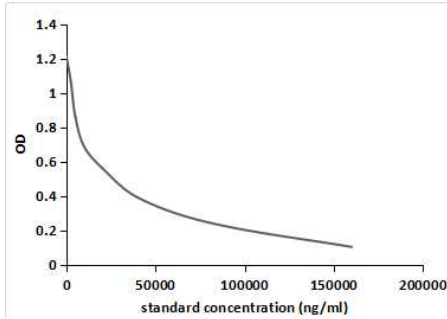
Store at 4°C for frequent use.

Aliquot and store at -20°C for 24 months.

Stability Test: The thermal stability is described by the loss rate. The loss rate was determined by accelerated thermal degradation test, that is, incubate the protein at 37°C for 48h, and no obvious degradation and precipitation were observed. The loss rate is less than 5% within the

expiration date under appropriate storage condition.

[IDENTIFICATION]



Competitive inhibition ELISA;

Coated protein: LRT conjugated to OVA

(Catalog: CPV769Mi21);

Standard: Series Diluted LRT;

Primary Ab: 1.07µg/mL Mouse Anti LRT

Antibody;

Second Ab: 2µg/mL HRP-Linked

Caprine Anti-mouse IgG

Polyclonal Antibody

(Catalog: SAA544Mu19)

IC₅₀=10000ng/mL

[IMPORTANT NOTE]

The kit is designed for research use only, we will not be responsible for any issue if the kit was used in clinical diagnostic or any other procedures.