

MAA482Ra21

Monoclonal Antibody to Endothelin 1 (EDN1)

Organism Species: *Rattus norvegicus* (Rat)

Instruction manual

FOR RESEARCH USE ONLY

NOT FOR USE IN CLINICAL DIAGNOSTIC PROCEDURES

13th Edition (Revised in Aug, 2023)

[PROPERTIES]

Source: Monoclonal antibody preparation

Host: Mouse

Antibody isotype: IgG1Kappa

Purification: Protein A + Protein G affinity chromatography

Clone number: C1

Traits: Liquid

Concentration: 1mg/mL

UOM: 100µL

Cross Reactivity: Human;Mouse

Applications: WB

[IMMUNOGEN]

Immunogen: Recombinant EDN1 (Ser54~His202) expressed in *E.coli*

Accession No.: RPA482Ra01

[APPLICATIONS]

Western blotting: 0.01-2µg/mL;

Optimal working dilutions must be determined by end user.

[FORMULATION]

Form & Buffer: Supplied as solution form in PBS, pH7.4.

[STORAGE AND STABILITY]

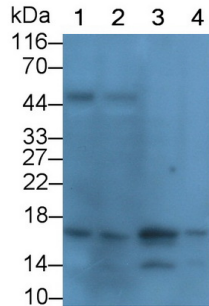
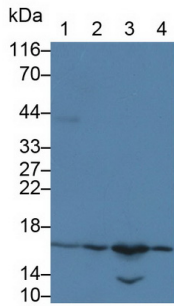
Storage: Avoid repeated freeze/thaw cycles.

Store at 4°C for frequent use.

Aliquot and store at -20°C for 24 months.

Stability Test: The thermal stability is described by the loss rate. The loss rate was determined by accelerated thermal degradation test, that is, incubate the protein at 37°C for 48h, and no obvious degradation and precipitation were observed. The loss rate is less than 5% within the expiration date under appropriate storage condition.

[IDENTIFICATION]



Western Blot; Sample: Lane1: Rat Lung lysate; Lane2: Rat Colon lysate; Lane3: 3T3-L1 cell lysate; Lane4: SGC7901 cell lysate	Western Blot; Sample: Lane1: Rat Lung lysate; Lane2: Rat Colon lysate; Lane3: 3T3-L1 cell lysate; Lane4: SGC7901 cell lysate
Primary Ab: 0.2µg/ml Mouse Anti-Rat EDN1 Antibody	Primary Ab: 0.2µg/ml Mouse Anti-Rat EDN1 Antibody
Second Ab: 0.2µg/mL HRP-Linked Mouse IgG Polyclonal Antibody (Catalog: SAA544Mu19)	Second Ab: 0.2µg/mL HRP-Linked Caprine Anti-Mouse IgG Polyclonal Antibody (Catalog: SAA544Mu19)

[IMPORTANT NOTE]

The kit is designed for research use only, we will not be responsible for any issue if the kit was used in clinical diagnostic or any other procedures.