

MAK776Ge22

Monoclonal Antibody to Chloramphenicol (CAP)

Organism Species: *Pan-species (General)*

Instruction manual

FOR RESEARCH USE ONLY

NOT FOR USE IN CLINICAL DIAGNOSTIC PROCEDURES

13th Edition (Revised in Aug, 2023)

[PROPERTIES]

Source: Monoclonal antibody preparation

Host: Mouse

Antibody isotype: IgG2b Lambda

Purification: Protein A + Protein G affinity chromatography

Clone number: C2

Traits: Liquid

Concentration: 0.67mg/mL

UOM: 100µL

Cross Reactivity: N/A

Applications: ELISA

[IMMUNOGEN]

Immunogen: Small Molecule, CAP conjugated to OVA.

Accession No.: CPK776Ge21

[APPLICATIONS]

Enzyme-Linked Immune Immunosorbent: 0.05µg/mL;

Optimal working dilutions must be determined by end user.

[FORMULATION]

Form & Buffer: Supplied as solution form in 0.01M PBS, pH7.4, containing 0.05% Proclin-300, 50% glycerol.

[STORAGE AND STABILITY]

Storage: Avoid repeated freeze/thaw cycles.

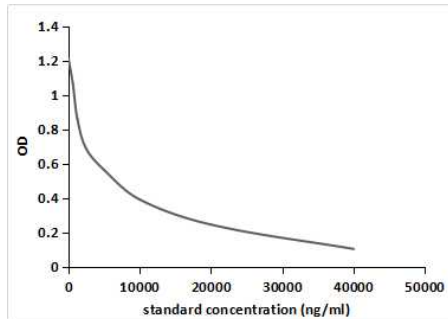
Store at 4°C for frequent use.

Aliquot and store at -20°C for 24 months.

Stability Test: The thermal stability is described by the loss rate. The loss rate was determined by accelerated thermal degradation test, that is, incubate the protein at 37°C for 48h, and no obvious degradation and precipitation were observed. The loss rate is less than 5% within the

expiration date under appropriate storage condition.

[IDENTIFICATION]



competitive inhibition ELISA;

Coated protein: CAP conjugated to

BSA (Catalog:CPK776Ge11);

Standard:Series Diluted CAP;

Primary Ab: 0.05µg/ml Mouse Anti CAP

Antibody;

Second Ab: 2µg/mL HRP-Linked

Caprine Anti-mouse IgG

PolyclonalAntibody

(Catalog: SAA544Mu19)

IC50=2500ng/ml

[IMPORTANT NOTE]

The kit is designed for research use only, we will not be responsible for any issue if the kit was used in clinical diagnostic or any other procedures.