



WERI-Rb-1

CSI334Hu11

Instruction manual

FOR RESEARCH USE ONLY

NOT FOR USE IN CLINICAL DIAGNOSTIC PROCEDURES

2nd Edition (Revised in Apr, 2025)

[DESCRIPTION]

WERI-Rb-1 exhibit grape-like clusters of round cells that were isolated from the retina of a female 1-year-old, with Retinoblastoma.

Synonyms: WERI-RB-1; WERI-Rb 1; WERI-Rb1; WERI-RB1; WERI Rb-1; WERI;

Organism: Homo sapiens, human

Tissue: Eye; Retina

Disease: Retinoblastoma

Age: 1 year

Gender: Female

Morphology: grape-like clusters of round cells

Growth properties: Suspension

[PROPERTIES]

Cell activity: >95% (Viability by Trypan Blue Exclusion).

Formulation: Frozen 1 mL or T25 flask.

Biosafety: Negative for HIV-1, HBV, HCV, mycoplasma, bacteria, yeast and fungi.

Applications: For research use only. It is not approved for human or animal use, or for application in clinical diagnostic procedures.

Size: $>5 \times 10^5$ cell/vial

[STORAGE]

Upon receiving, check all containers for leakage or breakage. directly and immediately transfer the cells from dry ice to liquid nitrogen and keep the cells in liquid nitrogen until they are needed for experiments.

Form & Buffer: Supplied as solution form in frozen stock solution, containing 50% base medium +40%FBS+10%DMSO.

Storage conditions: liquid nitrogen

[USAGE]

Culture conditions:

Complete growth medium: RPMI-1640+10%FBS+1%Penicillin-Streptomycin Solution

Temperature: 37°C

Condition: 95% air, 5% carbon dioxide

**Cell recovery:**

1. Thaw the vial by gentle agitation in a 37°C water bath. To reduce the possibility of contamination, keep the cap out of the water. The thawing time is about 2 minutes.
2. Remove the vial from the water bath as soon as the contents are thawed, and decontaminate by spraying with 75% ethanol. All of the operations from this point on should be carried out under strict aseptic conditions.
3. Transfer the vial contents to a centrifuge tube containing 9.0mL complete culture medium. and spin at approximately 1000 rpm for 5 minutes.
4. Resuspend cell pellet with the recommended complete medium . and dispense into a T25 culture flask.
5. Incubate the culture at 37°C, 5% CO₂ in a suitable incubator.

Cell passage:

The cells are suspended cells, and maintain cultures at a cell concentraion between 1×10^5 and 2×10^6 viable cells/mL. Cultures can be maintained by the addition of fresh medium or replacement of medium. Alternatively, cultures can be established by centrifugation with subsequent resuspension at $2-3 \times 10^5$ viable cells/mL, and centrifugal speed reference 1200 rpm centrifuge 3 min. According to culture experience, it is recommended to use the "half-change solution method" for passage, that is, directly add an equal amount of fresh culture solution to the cell culture bottle, then the cells are blown evenly and transferred to two new T25 culture bottles for further culture. Depending on cell density, it is recommended to add fresh medium every 3-4 days.

[Shipping]

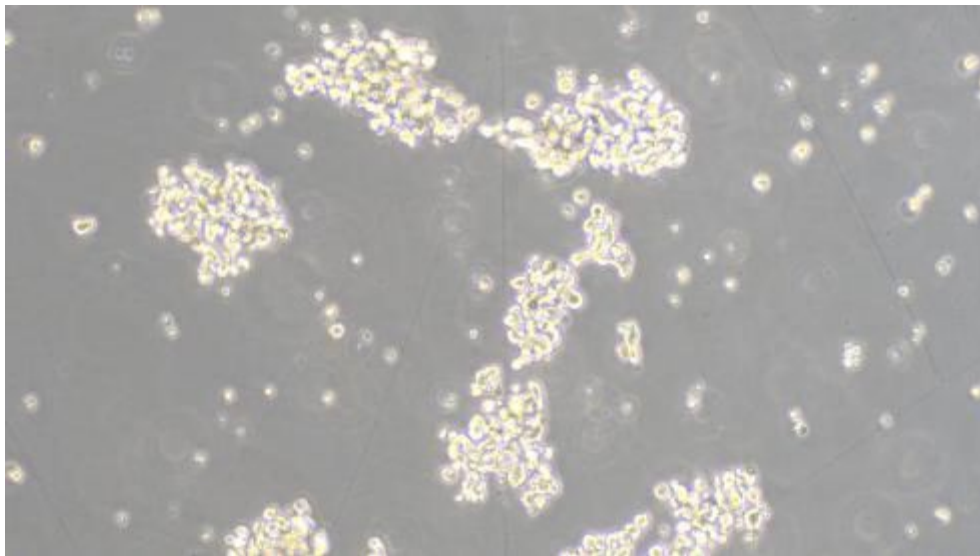
Dry ice.

[IMPORTANTNOTE]

1. This product is intended for laboratory research use only. It is not intended for any animal or human therapeutic use, any human or animal consumption, or any diagnostic use.
2. To insure the highest level of viability, thaw the vial and initiate the culture as soon as possible upon receipt. If upon arrival, continued storage of the frozen culture is necessary, it should be stored in liquid nitrogen vapor phase and not at -70°C. Storage at -70°C will result in loss of viability.
3. After cell recovery, please take regular microscopic examination and photos to record the growth status of cells.
4. The cells are suspension cells, please pay attention to centrifuge to collect cell suspension; Do not throw away the cell culture solution directly.
5. Read the instructions carefully, and keep and operate in strict accordance with the instructions. If you observe abnormalities or have questions about cell culture operations, please contact us in time.



[Figure]



Morphology of WERI-Rb-1 (Optical microscope, 100x, 200x)