



UCAF548Mi22
Anti-Lamin B1 (LMNB1) Monoclonal Antibody
Organism Species: Multi-species
Instruction manual

FOR RESEARCH USE ONLY
NOT FOR USE IN CLINICAL DIAGNOSTIC PROCEDURES

13th Edition (Revised in Aug, 2023)

[PROPERTIES]

Source: Monoclonal antibody preparation

Host: Mouse

Antibody isotype: IgG2b Kappa

Purification: Protein A+G Affinity Chromatography.

Clone number: 205#

Traits: Liquid

Concentration: 1mg/mL

UOM: 100µL

Applications: Loading Control of WB

[IMMUNOGEN]

Immunogen: Recombinant LMNB1 (Ser52~Gly233) expressed in *E.coli*.

Accession No.: RPF548Mi01

[ORGANISM SPECIES MORE]

React with: Human, Rabbit, Bovine, Canine, Porcine, Cavia ,Ovine, Rabbit;

Other species have not been detected.

[APPLICATIONS]

Western blotting: 0.01-2µg/mL;

Optimal working dilutions must be determined by end

[FORMULATION]

Form & Buffer: Supplied as solution form in 0.01M PBS, pH7.4, containing 0.02% NaN₃, 50% glycerol.

[STORAGE AND STABILITY]

Storage: Avoid repeated freeze/thaw cycles.

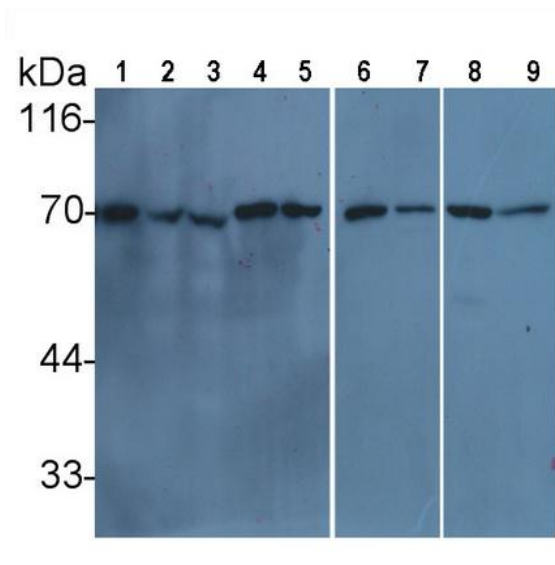
Store at 4°C for frequent use.

Aliquot and store at -20°C for 24 months.

Stability Test: The thermal stability is described by the loss rate. The loss rate

was determined by accelerated thermal degradation test, that is, incubate the protein at 37°C for 48h, and no obvious degradation and precipitation were observed. The loss rate is less than 5% within the expiration date under appropriate storage condition.

[IDENTIFICATION]

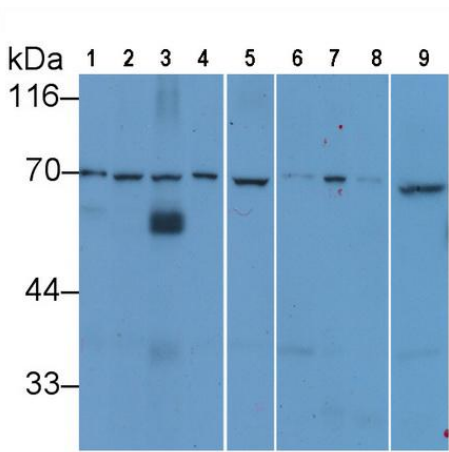


Western Blot; Sample: Lane1: 293T cell lysate; Lane2: Cavia Lung lysate; Lane3: Cavia Kidney lysate; Lane4: Canine Lung lysate; Lane5: Canine Kidney lysate; Lane6: Bovine Kidney lysate; Lane7: Rabbit Lung lysate; Lane8: Caprine Lung lysate; Lane9: Caprine Kidney lysate

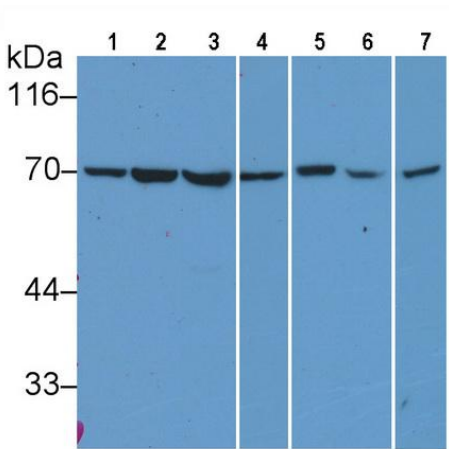
Primary Ab: 1 μ g/ml Mouse Anti-Multi-species LMNB1 Antibody

Second Ab: 0.2 μ g/mL HRP-Linked Caprine Anti-Mouse IgG Polyclonal Antibody

(Catalog: SAA544Mu19)



Western Blot; Sample: Lane1: Human Placenta lysate; Lane2: Mouse Cerebrum lysate; Lane3: Mouse Liver lysate; Lane4: Rat Cerebrum lysate; Lane5: Cavia Cerebrum lysate; Lane6: Canine Cerebrum lysate; Lane7: Porcine Cerebrum lysate; Lane8: Bovine Cerebrum lysate; Lane9: Caprine Cerebrum lysate
 Primary Ab: 1µg/ml Mouse Anti-Multi-species LMNB1 Antibody
 Second Ab: 0.2µg/mL HRP-Linked Caprine Anti-Mouse IgG Polyclonal Antibody
 (Catalog: SAA544Mu19)



Western Blot; Sample: Lane1: DU145 cell lysate; Lane2: HL60 cell lysate; Lane3: THP1 cell lysate; Lane4: OS-RC-2 cell lysate; Lane5: HEC-1B cell lysate; Lane6: MDA-MB-435S cell lysate; Lane7: T-47D cell lysate
 Primary Ab: 0.5µg/ml Mouse Anti-Multi-species LMNB1 Antibody
 Second Ab: 0.2µg/mL HRP-Linked Caprine Anti-Mouse IgG Polyclonal Antibody
 (Catalog: SAA544Mu19)

[Important Note]

The kit is designed for in vitro and research use only, we will not be responsible for any issue if the kit was used in clinical diagnostic or any other procedures.