



CAA979Mi22
Anti-Cyclophilin A (CYPA) Monoclonal Antibody
Instruction manual

FOR RESEARCH USE ONLY
NOT FOR USE IN CLINICAL DIAGNOSTIC PROCEDURES

12th Edition (Revised in Aug, 2016)

[PROPERTIES]

Source: Monoclonal antibody preparation

Host: Mouse

Purification: Protein A/G Affinity Chromatography.

Clone number: D6

Traits: Liquid

Concentration: 1mg/mL

UOM: 100 μ L

Applications: WB; IHC; ICC/IF

[IMMUNOGEN]

Immunogen: Recombinant CYPA (Val2~Leu164) expressed in *E.coli*.

Accession No.: RPA979Mi01

[ORGANISM SPECIES MORE]

React with: Human; Mouse; Rat; Bovine; Pig.

Other species have not been detected.

[APPLICATIONS]

Western blotting: 0.01-2 μ g/mL;

Immunohistochemistry: 5-30 μ g/mL;

Immunofluorescence: 5-20 μ g/mL;

Optimal working dilutions must be determined by end user.

[FORMULATION]

Form & Buffer: Supplied as solution form in 0.01M PBS, pH7.4, containing 0.05% Proclin-300, 50% glycerol.

[STORAGE AND STABILITY]

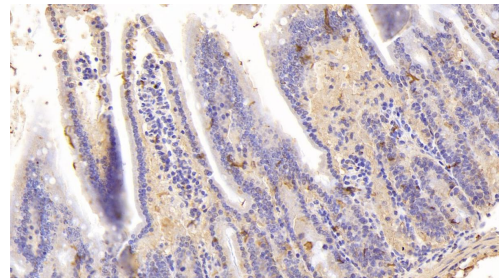
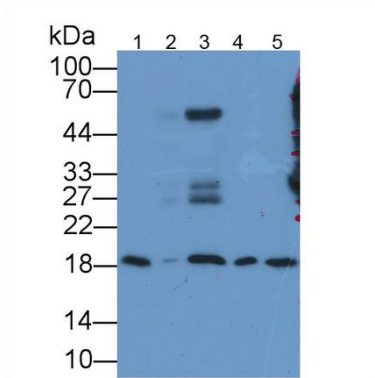
Storage: Avoid repeated freeze/thaw cycles.

Store at 4°C for frequent use.

Aliquot and store at -20°C for 24 months.

Stability Test: The thermal stability is described by the loss rate. The loss rate was determined by accelerated thermal degradation test, that is, incubate the protein at 37°C for 48h, and no obvious degradation and precipitation were observed. The loss rate is less than 5% within the expiration date under appropriate storage condition.

[IDENTIFICATION]



Western Blot; Sample:

Lane1: Mouse Cerebrum lysate;

Lane2: Mouse Liver lysate;

Lane3: Mouse Testis lysate;

Lane4: HepG2 cell lysate;

Lane5: Jurkat cell lysate

Primary Ab: 2 μ g/ml Mouse Anti-Mouse CYPA Antibody

Second Ab: 0.2 μ g/mL HRP-Linked

Caprine Anti-Mouse IgG Polyclonal Antibody

(Catalog: SAA544Mu19)

DAB staining on IHC-P;

Sample: Mouse Small intestine Tissue;

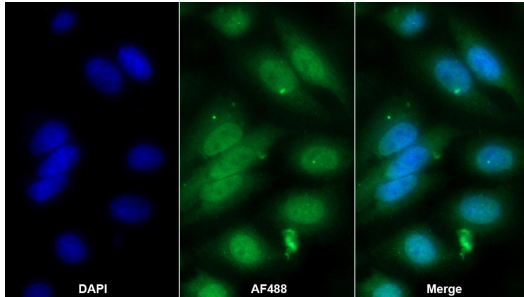
Primary Ab: 30 μ g/ml Mouse

Anti-Multi-species CYPA Antibody

Second Ab: 2 μ g/mL HRP-Linked Caprine

Anti-Mouse IgG Polyclonal Antibody

(Catalog: SAA544Mu19)



AF488 staining on IF;

Sample: HeLa cell

Primary Ab: 20 μ g/ml Mouse Anti-Multi-species CYPA
Antibody

Second Ab: 2 μ g/ml AF488-Linked Caprine Anti-Mouse IgG
Polyclonal Antibody
(Catalog: SAA544Mu11)

[Important Note]

The kit is designed for in vitro and research use only, we will not be responsible for any issue if the kit was used in clinical diagnostic or any other procedures.