

**RPM264Hu01 100µg**

**Recombinant Specificity Protein 1 (Sp1)**

**Organism : Homo sapiens (Human)**

***Instruction manual***

FOR IN VITRO USE AND RESEARCH USE ONLY

NOT FOR USE IN CLINICAL DIAGNOSTIC PROCEDURES

---

---

9th Edition (Revised in Jul, 2013)

## **[ PROPERTIES ]**

**Residues:** Leu260~Ala591 (Accession # P08047),  
with two N-terminal Tags, His-tag and GST-tag.

**Host:** *E. coli*

**Subcellular Location:** Nucleus. Cytoplasm.

**Purity:** >95%

**Endotoxin Level:** <1.0EU per 1µg  
(determined by the LAL method).

**Formulation:** Supplied as lyophilized form in PBS,  
pH7.4, containing 1mM DTT, 5% trehalose, 0.01%  
sarcosyl and preservative.

**Predicted isoelectric point:** 5.5

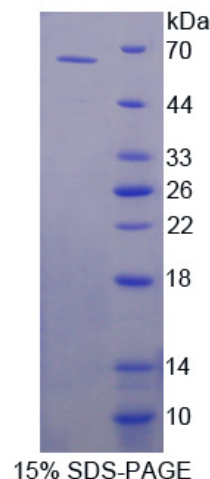
**Predicted Molecular Mass:** 65.4kDa

**Applications:** SDS-PAGE; WB; ELISA; IP.

(May be suitable for use in other assays to be determined by the end user.)

## **[ USAGE ]**

Reconstitute in sterile PBS, pH7.2-pH7.4.



## [ STORAGE AND STABILITY ]

### **Storage: Avoid repeated freeze/thaw cycles.**

Store at 2-8°C for one month.

Aliquot and store at -80°C for 12 months.

**Stability Test:** The thermal stability is described by the loss rate of the target protein. The loss rate was determined by accelerated thermal degradation test, that is, incubate the protein at 37°C for 48h, and no obvious degradation and precipitation were observed. (Referring from China Biological Products Standard, which was calculated by the Arrhenius equation.) The loss of this protein is less than 5% within the expiration date under appropriate storage condition.

## [ SEQUENCES ]

The target protein is fused with two N-terminal Tags, His-tag and GST-tag, its sequence is listed below.

MSPILGYWKI KGLVQPTRLLEYLEEKYEE HLYERDEGDK WRNKKFELGL EFPNLPYYID  
GDVKLTQSMA IIRYIADKHN MLGGCPKERA EISMLEGAVL DIRYGVSRIA YSKDFETLKV  
DFLSKLPEML KMFEDRLCHK TYLNGDHVTH PDFMLYDALD VVLYMDPMCL DAFPKLVCFK  
KRIEAIPQID KYLKSSKYIA WPLQGWQATF GGGDHPKSD GSTSGSGHHH HHSAGLVPR  
GSTAIGKET AAKFERQHM DSPDLGTLEV LFGQPLGSEF- L NGNITLLPVN SVSAATLTPS  
SQAVTISSSG SQESGSQPVT SGTTISSASL VSSQASSSSF FTNANSYSTT TTTSNMGIMN  
FTTSGSSGTN SQGQTPQRVS GLQGSDALNI QQNQTSGGSL QAGQQKEGEQ  
NQQTQQQIL IQPQLVGGGQ ALQALQAAPL SGQTFTTQAI SQETLQNLQL QAVPNSGPII  
IRTPTVGPNG QVSWQTLQLQ NLQVQNPQAQ TITLAPMQGV SLGQTSSSNT TLPIASAAS  
IPAGTVTVNA AQLSSMPGLQ TINLSALGTS GIQVHPIQGL PLAIANAPGD HGAQLGLHGA  
GGDGIHDDTA GGEEGENSPD A

## [ REFERENCES ]

1. Infantino V., *et al.* (2011) Biochem. Biophys. Res. Commun. 412:86-91.
2. Takahara T., *et al.* (2000) J. Biol. Chem. 275:38067-38072.
3. Jackson S.P., Tjian R. (1988) Cell 55:125-133.
4. Courey A.J., Tjian R. (1988) Cell 55:887-898.