

**RPL818Bo01 1**

**Recombinant Wingless Type MMTV Integration Site Family, Member 3 (WNT3)**

**Organism Species: *Bos taurus*; Bovine (Cattle)**

***Instruction manual***

FOR RESEARCH USE ONLY

NOT FOR USE IN CLINICAL DIAGNOSTIC PROCEDURES

---

12th Edition (Revised in Aug, 2016)

**[ PROPERTIES ]**

**Source:** Prokaryotic expression

**Host:** *E.coli*

**Residues:** Val19~Lys355

**Tags:** N-terminal His Tag

**Subcellular Location:** Secreted, Extracellular matrix

**Purity:** > 90%

**Traits:** Freeze-dried powder

**Buffer formulation:** 20mM Tris, 150mM NaCl, pH8.0, containing 1mM EDTA, 1mM DTT, 0.01% SKL, 5% Trehalose and Proclin300.

**Original Concentration:** 200µg/mL

**Applications:** Positive Control; Immunogen; SDS-PAGE; WB.

(May be suitable for use in other assays to be determined by the end user.)

**Predicted isoelectric point:** 7.5

**Predicted Molecular Mass:** 41.4kDa

**Accurate Molecular Mass:** 41kDa as determined by SDS-PAGE reducing conditions.

**[ USAGE ]**

Reconstitute in 20mM Tris, 150mM NaCl (pH8.0) to a concentration of 0.1-1.0 mg/mL. Do not vortex.

**[ STORAGE AND STABILITY ]**

**Storage:** Avoid repeated freeze/thaw cycles.

Store at 2-8°C for one month.

Aliquot and store at -80°C for 12 months.

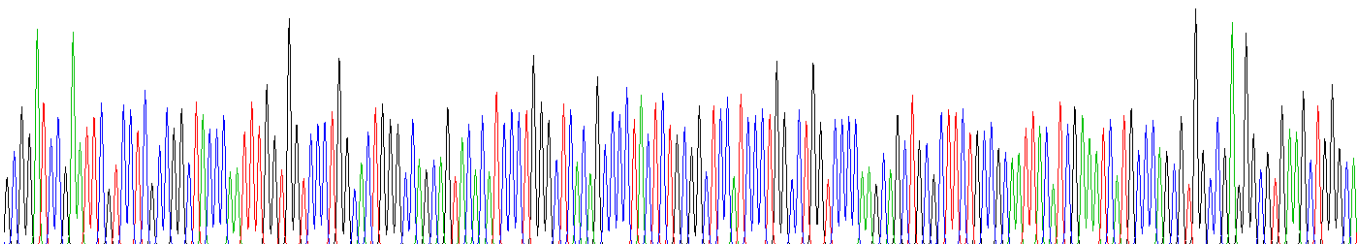
**Stability Test:** The thermal stability is described by the loss rate. The loss rate was determined by accelerated thermal degradation test, that is, incubate the protein at 37°C for 48h, and no obvious degradation and precipitation were observed. The loss rate is less than 5% within the expiration date under appropriate storage condition.

**[ SEQUENCE ]**

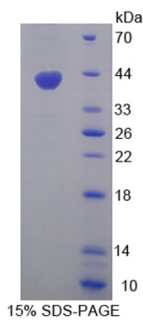
VL AGYPIWWSLA LGQQYTSLGS QPLLCGSIPG  
 LVPKQLRFCR NYIEIMPSVA EGVKLG IQEC QHQFRGRRWN CTTIDDSLAI  
 FGPVLDKATR ESAFVHAIAS AGVAFAVTRS CAEGTSTICG CDSHHKGPPG  
 EGWKWGGCSE DADFGVLVSR EFADARENRP DARSAMNKHN NEAGR TTILD  
 HMKLCKKCHG LSGSCEVKTC WWAQPDFRAI GDFLKDKYDS ASEM VVEKHR  
 ESRGWVETLR AKYALFKPPT ERDLVYYENS PNFCEPNPET GSFGRDRTC  
 NVTSHGIDGC DLLCCGRGHN TRTEKRKEKC HCIFHWCCYV SCQECIRIYD  
 VHTCK

**[ IDENTIFICATION ]**

ATGGATCCGAAATTCGTCTCTGTCGCGGCTACCCGAAATTTGGTGGTCCCTGGCCCTGGGCGAGCTGACATCCCTGGGCTGAGCGCCCTACTCTGGGCTCCATCCCTGGCTGGTCCCGAGCGAGCTGGCTTCTGCGCAATTACATGGAAATTCATGCCCAGCGTGGCGAGGGCGTGAGCTGGCA



**Figure. Gene Sequencing (Extract)**



**Figure. SDS-PAGE**

**[ IMPORTANT NOTE ]**

The kit is designed for research use only, we will not be responsible for any issue if the kit was used in clinical diagnostic or any other procedures.