

**RPL087Hu01 10ug**

**Recombinant WW Domain Containing E3 Ubiquitin Protein Ligase 2 (WWP2)**

**Organism Species: *Homo sapiens (Human)***

***Instruction manual***

FOR RESEARCH USE ONLY

NOT FOR USE IN CLINICAL DIAGNOSTIC PROCEDURES

---

12th Edition (Revised in Aug, 2016)

**[ PROPERTIES ]**

**Source:** Prokaryotic expression

**Host:** *E.coli*

**Residues:** His601~Glu870

**Tags:** N-terminal His Tag

**Subcellular Location:** Nucleus

**Purity:** > 97%

**Traits:** Freeze-dried powder

**Buffer formulation:** PBS, pH7.4, containing 0.01% SKL, 5% Trehalose.

**Original Concentration:** 350µg/mL

**Applications:** Positive Control; Immunogen; SDS-PAGE; WB.

(May be suitable for use in other assays to be determined by the end user.)

**Predicted isoelectric point:** 5.3

**Predicted Molecular Mass:** 35.9kDa

**Accurate Molecular Mass:** 34kDa as determined by SDS-PAGE reducing conditions.

**[ USAGE ]**

Reconstitute in 10mM PBS (pH7.4) to a concentration of 0.1-1.0 mg/mL. Do not vortex.

**[ STORAGE AND STABILITY ]**

**Storage:** Avoid repeated freeze/thaw cycles.

Store at 2-8°C for one month.

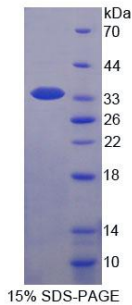
Aliquot and store at -80°C for 12 months.

**Stability Test:** The thermal stability is described by the loss rate. The loss rate was determined by accelerated thermal degradation test, that is, incubate the protein at 37°C for 48h, and no obvious degradation and precipitation were observed. The loss rate is less than 5% within the expiration date under appropriate storage condition.

**[ SEQUENCE ]**

HLTYFRFIGR FIAMALYHGK FIDTGFTLPF YKRMLNKRPT LKDLESIDPE  
FYNSIVWIKE NNLEECGLEL YFIQDMEILG KVTTHELKEG GESIRVTEEN  
KEEYIMLLTD WRFRTRGVVEEQ TKAFLDGFNE VAPLEWLRYF DEKELEMLC  
GMQEIDMSDW QKSTIYRHYT KNSKQIQWFV QVVKEMDNEK RIRLLQFVTG  
TCRLPVGGFA ELIGSNGPQK FCIDKVGKET WLPRSHTCFN RDLPPYKSY  
EQLREKLLYA IEETEGFGQE

**[ IDENTIFICATION ]**



**[ IMPORTANT NOTE ]**

The kit is designed for research use only, we will not be responsible for any issue if the kit was used in clinical diagnostic or any other procedures.