

RPA145Hu02 100µg

Recombinant Vascular Endothelial Growth Factor C (VEGFC)

Organism Species: *Homo sapiens (Human)*

Instruction manual

FOR RESEARCH USE ONLY

NOT FOR USE IN CLINICAL DIAGNOSTIC PROCEDURES

12th Edition (Revised in Aug, 2016)

[PROPERTIES]

Source: Prokaryotic expression

Host: *E.coli*

Residues: Glu47~Trp413

Tags: Two N-terminal Tags, His-tag and SUMO-tag

Subcellular Location: Secreted

Purity: > 80%

Traits: Freeze-dried powder

Buffer formulation: PBS, pH7.4, containing 0.01% SKL, 5% Trehalose.

Original Concentration: 200µg/mL

Applications: Positive Control; Immunogen; SDS-PAGE; WB.

(May be suitable for use in other assays to be determined by the end user.)

Predicted isoelectric point: 8.2

Predicted Molecular Mass: 55.3kDa

Accurate Molecular Mass: 55kDa as determined by SDS-PAGE reducing conditions.

[USAGE]

Reconstitute in 10mM PBS (pH7.4) to a concentration of 0.1-1.0 mg/mL. Do not vortex.

[STORAGE AND STABILITY]

Storage: Avoid repeated freeze/thaw cycles.

Store at 2-8°C for one month.

Aliquot and store at -80°C for 12 months.

Stability Test: The thermal stability is described by the loss rate. The loss rate was determined by accelerated thermal degradation test, that is, incubate the protein at 37°C for 48h, and no obvious degradation and precipitation were observed. The loss rate is less than 5% within the expiration date under appropriate storage condition.

[SEQUENCE]

EATA
 YASKDLEEQL RSVSSVDELM TVLYPEYWKM YKCQLRKGGW QHNREQANLN
 SRTEETIKFA AAHYNTEILK SIDNEWRTQ CMPREVCIDV GKEFGVATNT
 FFKPPCVSVY RCGGCCNSEG LQCMNTSTSY LSKTLFEITV PLSQGPKPVT
 ISFANHTSCR CMSKLDVYRQ VHSIIRRS LP ATLPQCQAAN KTCPTNYMWN
 NHICRCLAQE DFMFSSDAGD DSTDGFHDIC GPNKELDEET CQCVCRAGLR
 PASCOPHKEL DRNSCQCVCK NKLFP SQCGA NREFDENTCQ CVCKRTCPRN
 QPLNPGKCAC ECTESPQKCL LKGKKFHHQT CSCYRRPCTN RQKACEPGFS
 YSEEVCRCPV SYW

[IDENTIFICATION]

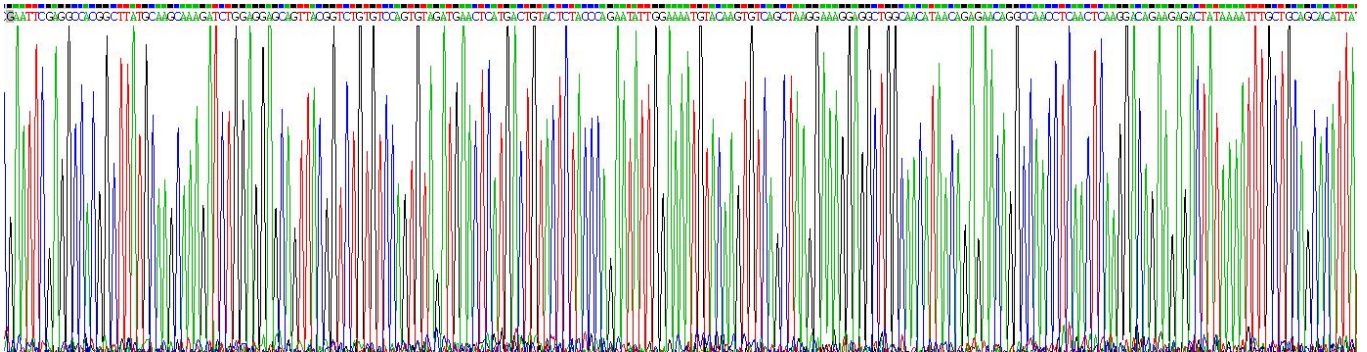


Figure . Gene Sequencing (extract)

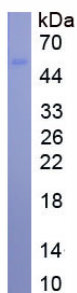


Figure. SDS-PAGE

[IMPORTANT NOTE]

The kit is designed for research use only, we will not be responsible for any issue if the kit was used in clinical diagnostic or any other procedures.