

RPA663Hu03 50µg

Recombinant Toll Like Receptor 2 (TLR2)

Organism Species: *Homo sapiens (Human)*

Instruction manual

FOR RESEARCH USE ONLY

NOT FOR USE IN CLINICAL DIAGNOSTIC PROCEDURES

13th Edition (Revised in Aug, 2023)

[PROPERTIES]

Source: Prokaryotic expression

Host: *E.coli*

Residues: Glu21~Thr588

Tags: N-terminal His Tag

Subcellular Location: Secreted

Purity: > 95%

Traits: Freeze-dried powder

Buffer formulation: PBS, pH7.4, containing 0.01% SKL, 5% Trehalose .

Original Concentration: 120µg/mL

Applications: Positive Control; Immunogen; SDS-PAGE; WB.

(May be suitable for use in other assays to be determined by the end user.)

Predicted isoelectric point: 5.6

Predicted Molecular Mass: 67.9kDa

Accurate Molecular Mass: 66kDa as determined by SDS-PAGE reducing conditions.

[USAGE]

Reconstitute in 10mM PBS (pH7.4) to a concentration of 0.1-1.0 mg/mL. Do not vortex.

[STORAGE AND STABILITY]

Storage: Avoid repeated freeze/thaw cycles.

Store at 2-8°C for one month.

Aliquot and store at -80°C for 12 months.

Stability Test: The thermal stability is described by the loss rate. The loss rate was determined by accelerated thermal degradation test, that is, incubate the protein at 37°C for 48h, and no obvious degradation and precipitation were observed. The loss rate is less than 5% within the expiration date under appropriate storage condition.

[SEQUENCE]

```

ESSNQASLSC DRNGICKGSS  GSLNSIPSGL TEAVKSLDLS  NNRITYISNS DLQRCVNLQA  LVLTSNGINT IEEDSFSSLG
SLEHLDSYN  YLSNLSSSF  KPLSSLTFLN LLGNPYKTLG  ETSLSFHLTK LQILRVGNMD  TFTKIQRKDF  AGLTFLEELE
IDASDLQSYE PKSLKSIQNV  SHLILHMKQH ILLLEIFVDV  TSSVECLELR DTDLDTFHFS  ELSTGETNSL  IKKFTFRNVK
ITDESLFQVM KLLNQISGLL  ELEFDDCTLN GVGNFRAASN  DRVIDPGKVE  TLTIRRLHIP  RFYLFYDLST  LYSLTERVKR
ITVENSKVFL VPCLLSQHLK  SLEYLDLSEN LMVEEYLKNS  ACEDAWPSLQ  TLILRQNHLA  SLEKTGETLL  TLKNLTNIDI
SKNSFHSMPY TCQWPEKMKY  LNLSSSTRIHS VTGCIPKTLE  ILDVSNNNLN  LFSLNLPQLK  ELYISRNLKM  TLPDASLLPM
LLVLKISRNA ITTFSKEQLD  SFHTLKTLEA  GGNNFICSCE  FLSFTQEQA  LAKVLIDWPA  NYLCDSPSHV  RGQQVQDVRL
SVSECHRT
  
```

[IDENTIFICATION]

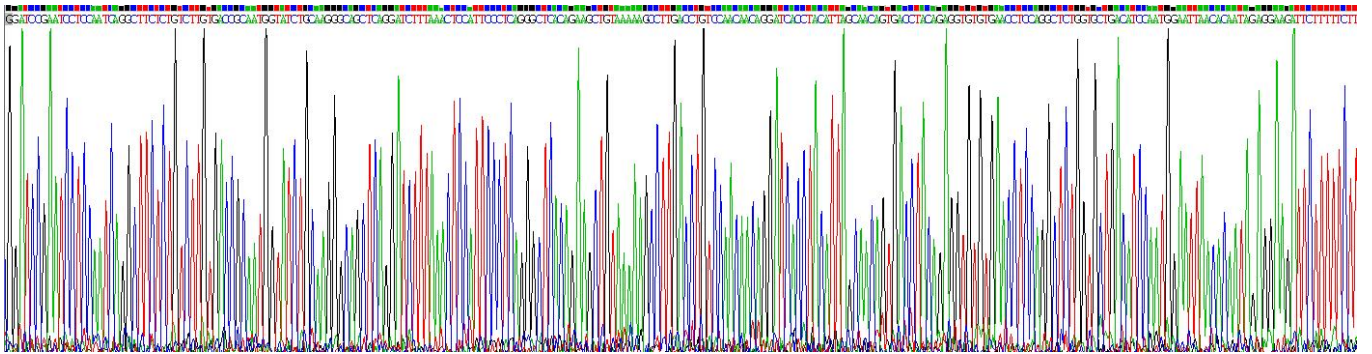


Figure . Gene Sequencing (extract)

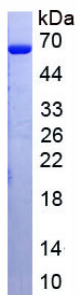


Figure. SDS-PAGE

[IMPORTANT NOTE]

The kit is designed for research use only, we will not be responsible for any issue if the kit was used in clinical diagnostic or any other procedures.