

**RPA611Ra04 50µg**

**Recombinant Thrombospondin 1 (THBS1)**

**Organism Species: *Rattus norvegicus* (Rat)**

***Instruction manual***

FOR RESEARCH USE ONLY

NOT FOR USE IN CLINICAL DIAGNOSTIC PROCEDURES

---

12th Edition (Revised in Aug, 2016)

**[ PROPERTIES ]**

**Source:** Prokaryotic expression

**Host:** *E.coli*

**Residues:** Gly511~Ser670

**Tags:** N-terminal His Tag

**Subcellular Location:** Secreted

**Purity:** > 97%

**Traits:** Freeze-dried powder

**Buffer formulation:** 20mM Tris, 150mM NaCl, pH8.0, containing 0.01% skl, 5%Trehalose.

**Original Concentration:** 150µg/mL

**Applications:** Positive Control; Immunogen; SDS-PAGE; WB.

(May be suitable for use in other assays to be determined by the end user.)

**Predicted isoelectric point:** 7.6

**Predicted Molecular Mass:** 18.6kDa

**Accurate Molecular Mass:** 16/18/20kDa as determined by SDS-PAGE reducing conditions.

**[ USAGE ]**

Reconstitute in 20mM Tris, 150mM NaCl (pH8.0) to a concentration of 0.1-1.0 mg/mL. Do not vortex.

**[ STORAGE AND STABILITY ]**

**Storage:** Avoid repeated freeze/thaw cycles.

Store at 2-8°C for one month.

Aliquot and store at -80°C for 12 months.

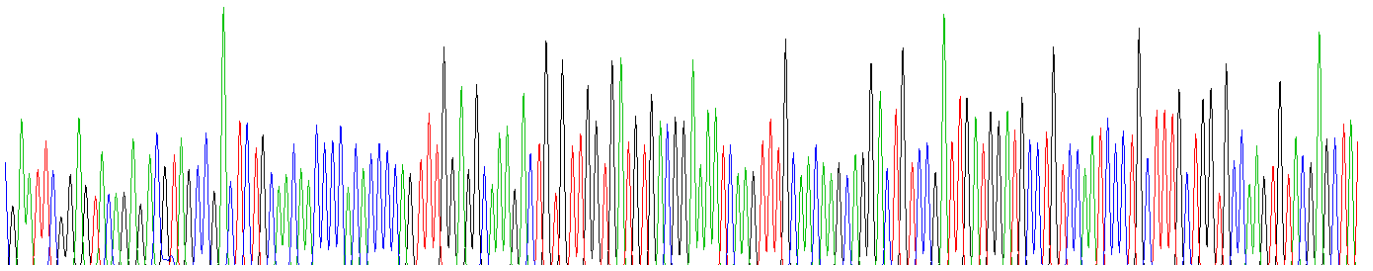
**Stability Test:** The thermal stability is described by the loss rate. The loss rate was determined by accelerated thermal degradation test, that is, incubate the protein at 37°C for 48h, and no obvious degradation and precipitation were observed. The loss rate is less than 5% within the expiration date under appropriate storage condition.

**[ SEQUENCE ]**

GVQRRSRLCN NPTPQFGGKD CVGDVTENQV CNKQDCPIDG  
 CLSNPCFAGA KCTSYPDGSW KCGACPPGYS GNGIQCKDVD ECKEVPDACF  
 NHNGEHRCKN TDPGYNCLPC PPRFTGSQPF GRGVEHAMAN KQVCKPRNPC  
 TDGTHDCNKN AKCNYLGHYS

**[ IDENTIFICATION ]**

ATG AAT TCG GAG TAC AG AGA AG TAC CCG AC TC TG CAA CAA ACC CAC CAC CCG AG TTT GGA GGC CAA AG AC TG TG TTGG TG ATG TG AC GG AAA TCA AG TTT GCA CAA GC AGG AC TG TCG ATTG ATGG ATGCC TG TCCA TCCC TGC TTT GCTGG TGCCA G TG TAC GAG C TAT



**Figure . Gene Sequencing (extract)**

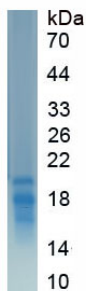


Figure. SDS-PAGE

**[ IMPORTANT NOTE ]**

The kit is designed for research use only, we will not be responsible for any issue if the kit was used in clinical diagnostic or any other procedures.