

RPB622Mu01 10 μ g

Recombinant Surfactant Associated Protein B (SPB)

Organism Species: *Mus musculus* (Mouse)

Instruction manual

FOR IN VITRO USE AND RESEARCH USE ONLY

NOT FOR USE IN CLINICAL DIAGNOSTIC PROCEDURES

10th Edition (Revised in Jan, 2014)

[**PROPERTIES**]

Residues: Gly20~Pro193

Tags: N-terminal His-Tag

Accession: P50405

Host: *E. coli*

Subcellular Location: Secreted, extracellular space, surface film.

Purity: >95%

Endotoxin Level: <1.0EU per 1 μ g
(determined by the LAL method).

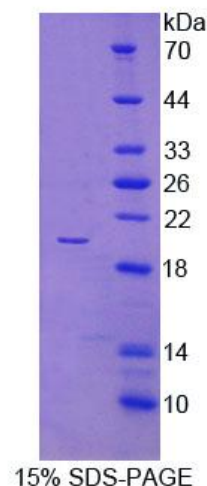
Formulation: Supplied as lyophilized form in 10mM PBS, pH7.4, containing 1mM DTT, 5% trehalose, 0.01% sarcosyl and preservative.

Predicted isoelectric point: 5.8

Predicted Molecular Mass: 20.7kDa

Applications: SDS-PAGE; WB; ELISA; IP.

(May be suitable for use in other assays to be determined by the end user.)



[**USAGE**]

Reconstitute in sterile ddH₂O.

[STORAGE AND STABILITY]

Storage: Avoid repeated freeze/thaw cycles.

Store at 2-8°C for one month.

Aliquot and store at -80°C for 12 months.

Stability Test: The thermal stability is described by the loss rate of the target protein. The loss rate was determined by accelerated thermal degradation test, that is, incubate the protein at 37°C for 48h, and no obvious degradation and precipitation were observed. (Referring from China Biological Products Standard, which was calculated by the Arrhenius equation.) The loss of this protein is less than 5% within the expiration date under appropriate storage condition.

[SEQUENCES]

The sequence of the target protein is listed below.

G AAITSSASSLE CAQGPQFWCQ SLEHAVQCRA LGHCLQEVLWG HAGANDLCQE
CEDIVHLLTK MTKEDAFQEA IRKFLEQECD ILPLKLLVPR CRQVLDVYLP LVIDYFQSQI
NPKAICNHVG LCPRGQAKPE QNPGMPDAVP NPLLDKLVLP VLPGALLARP GPHTQDFSEQ
QLP

[REFERENCES]

1. Bruno M.A., *et al.* (1995) Am. J. Physiol. 268:L381-L389.
2. Haczku A., *et al.* (2002) Am. J. Physiol. Lung Cell Mol. Physiol. 283:L755-65.
3. Epaud R., *et al.* (2003) Am. J. Respir. Cell Mol. Biol. 28:373-378.
4. Ueno T., *et al.* (2004) J. Biol. Chem. 279:16178-16184.