

**RPD198Ra01 10µg**

**Recombinant Sequestosome 1 (SQSTM1)**

**Organism Species: *Rattus norvegicus* (Rat)**

***Instruction manual***

FOR RESEARCH USE ONLY

NOT FOR USE IN CLINICAL DIAGNOSTIC PROCEDURES

---

12th Edition (Revised in Aug, 2016)

**[ PROPERTIES ]**

**Source:** Prokaryotic expression

**Host:** *E.coli*

**Residues:** Ala2~Leu439

**Tags:** N-terminal His Tag

**Subcellular Location:** Nucleus, Cytoplasm

**Purity:** > 90%

**Traits:** Freeze-dried powder

**Buffer formulation:** 20mM Tris, 150mM NaCl, pH8.0, containing 0.01% SKL, 5% Trehalose.

**Original Concentration:** 100µg/mL

**Applications:** Positive Control; Immunogen; SDS-PAGE; WB.

(May be suitable for use in other assays to be determined by the end user.)

**Predicted isoelectric point:** 4.8

**Predicted Molecular Mass:** 51.3kDa

**Accurate Molecular Mass:** 60kDa as determined by SDS-PAGE reducing conditions.

**Phenomenon explanation:**

The possible reasons that the actual band size differs from the predicted are as follows:

1. Splice variants: Alternative splicing may create different sized proteins from the same gene.
2. Relative charge: The composition of amino acids may affect the charge of the protein.
3. Post-translational modification: Phosphorylation, glycosylation, methylation etc.
4. Post-translation cleavage: Many proteins are synthesized as pro-proteins, and then cleaved to give the active form.
5. Polymerization of the target protein: Dimerization, multimerization etc.

**[ USAGE ]**

Reconstitute in ddH<sub>2</sub>O to a concentration of 0.1-1.0 mg/mL. Do not vortex.

**[ STORAGE AND STABILITY ]**

**Storage:** Avoid repeated freeze/thaw cycles.

Store at 2-8°C for one month.

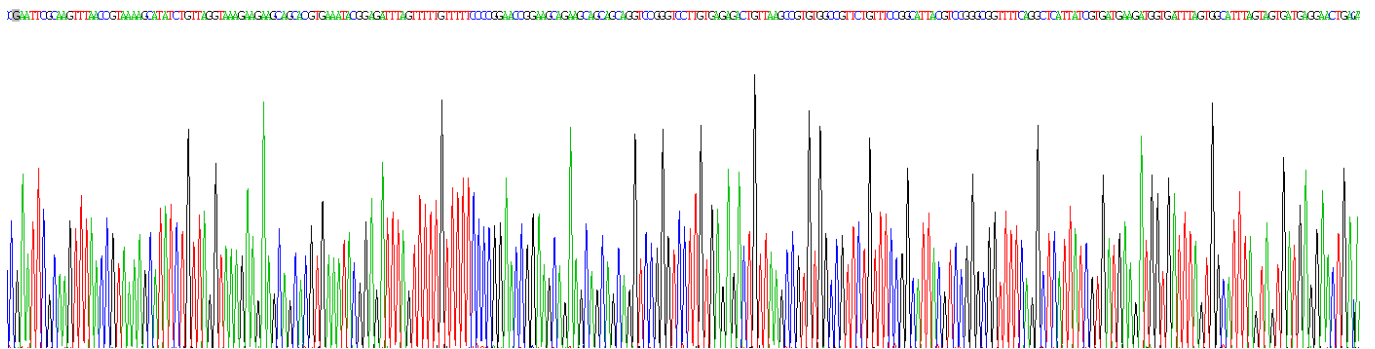
Aliquot and store at -80°C for 12 months.

**Stability Test:** The thermal stability is described by the loss rate. The loss rate was determined by accelerated thermal degradation test, that is, incubate the protein at 37°C for 48h, and no obvious degradation and precipitation were observed. The loss rate is less than 5% within the expiration date under appropriate storage condition.

**[ SEQUENCE ]**

```
ASLTVKAYL LGKEEAAREI RRFSCFSPE PEAEAAAGPG PCERLLSRVA
VLFPALRPGG FQAHYRDEDG DLVAFSSDEE LTMAMSYVKD DIFRIYIKEK
KECRREHRPP CAQEARMVH PNVICDGCNG PVVGTRYKCS VCPDYDLCVS
CEGKGLHREH SKLIFPNPFG HLSDFSFSHR WLRKCLKHGKF GWPGWEMGPP
GNWSPRPRA GDGRPCPTAE SASAPSEDPN VNFLKNVGES VAAALSPLGI
EVDIDVEHGG KRSRLTPTSA ESSSTGTEDK SGTQPSSCSS EVSKPDGAGE
GPAQSLTEQM KKIALESVGQ PEELMESDNC SGGDDDWTHL SSKEVDPSTG
ELQSLQMPES EGPSSLDPSQ EGPTGLKEAA LYPHLPPEAD PRLIESLSQM
LSMGFSDEGG WLTRLLQTKN YDIGAALDTI QYSKHPPPL
```

**[ IDENTIFICATION ]**



**Figure . Gene Sequencing (extract)**



Figure. SDS-PAGE

**[ IMPORTANT NOTE ]**

The kit is designed for research use only, we will not be responsible for any issue if the kit was used in clinical diagnostic or any other procedures.