

**RPK006Hu01 50µg**

**Recombinant SATB Homeobox Protein 1 (SATB1)**

**Organism Species: *Homo sapiens* (Human)**

***Instruction manual***

FOR RESEARCH USE ONLY

NOT FOR USE IN CLINICAL DIAGNOSTIC PROCEDURES

---

13th Edition (Revised in Aug, 2023)

**[ PROPERTIES ]**

**Source:** Prokaryotic expression

**Host:** *E.coli*

**Residues:** Thr72~Gln445

**Tags:** N-terminal His Tag

**Subcellular Location:** Nucleus

**Purity:** > 90%

**Traits:** Freeze-dried powder

**Buffer formulation:** PBS, pH7.4, containing 0.01% SKL, 5% Trehalose .

**Original Concentration:** 600µg/mL

**Applications:** Positive Control; Immunogen; SDS-PAGE; WB.

(May be suitable for use in other assays to be determined by the end user.)

**Predicted isoelectric point:** 6.6

**Predicted Molecular Mass:** 45.7kDa

**Accurate Molecular Mass:** 46kDa as determined by SDS-PAGE reducing conditions.

**[ USAGE ]**

Reconstitute in 10mM PBS (pH7.4) to a concentration of 0.1-1.0 mg/mL. Do not vortex.

**[ STORAGE AND STABILITY ]**

**Storage:** Avoid repeated freeze/thaw cycles.

Store at 2-8°C for one month.

Aliquot and store at -80°C for 12 months.

**Stability Test:** The thermal stability is described by the loss rate. The loss rate was determined by accelerated thermal degradation test, that is, incubate the protein at 37°C for 48h, and no obvious degradation and precipitation were observed. The loss rate is less than 5% within the expiration date under appropriate storage condition.

**[ SEQUENCE ]**

TMLPVFCVV EHYENAIEYD CKEEHAEFVL  
 VRKDMLFNQL IEMALLSLGY SHSSAAQAKG LIQVGKWNPV PLSYVTDAPD  
 ATVADMLQDV YHVVTLKIQL HSCPKELEDLP PEQWSHTTVR NALKDLLKDM  
 NQSSLAKECP LSQSMISSIV NSTYYANVSA AKCQEFGRWY KHFKKTKDMM  
 VEMDSLSELS QQGANHVNFG QQPVPNTAE QPPSPAQLSH GSQPSVRTPL  
 PNLHPGLVST PISPQLVNQQ LVMAQLLNQQ YAVNRLLAQQ SLNQQYLNHP  
 PPVSRSMNKP LEQQVSTNTE VSSEIYQWVR DELKRAGISQ AVFARVAFNR  
 TQGLLSEILR KEEDPKTASQ SLLVNLRAMQ NFLQLPEAER DRIYQ

**[ IDENTIFICATION ]**

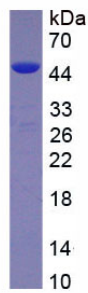


Figure. SDS-PAGE

**[ IMPORTANT NOTE ]**

The kit is designed for research use only, we will not be responsible for any issue if the kit was used in clinical diagnostic or any other procedures.