

RPH430Hu01 100µg

Recombinant Pyruvate Carboxylase (PC)

Organism Species: Homo sapiens (Human)

Instruction manual

FOR IN VITRO USE AND RESEARCH USE ONLY

NOT FOR USE IN CLINICAL DIAGNOSTIC PROCEDURES

10th Edition (Revised in Jan, 2014)

[PROPERTIES]

Residues: Pro36~Glu486

Tags: Two N-terminal Tags, His-tag and T7-tag

Accession: P11498

Host: *E. coli*

Subcellular Location: Mitochondrion matrix.

Purity: >90%

Endotoxin Level: <1.0EU per 1µg

(determined by the LAL method).

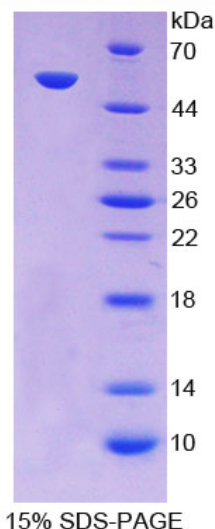
Formulation: Supplied as lyophilized form in PBS, pH7.4, containing 5% trehalose, 0.01% sarcosyl.

Predicted isoelectric point: 6.2

Predicted Molecular Mass: 53.6kDa

Applications: SDS-PAGE; WB; ELISA; IP.

(May be suitable for use in other assays to be determined by the end user.)



[USAGE]

Reconstitute in sterile PBS, pH7.2-pH7.4.

[STORAGE AND STABILITY]

Storage: Avoid repeated freeze/thaw cycles.

Store at 2-8°C for one month.

Aliquot and store at -80°C for 12 months.

Stability Test: The thermal stability is described by the loss rate of the target protein. The loss rate was determined by accelerated thermal degradation test, that is, incubate the protein at 37°C for 48h, and no obvious degradation and precipitation were observed. (Referring from China Biological Products Standard, which was calculated by the Arrhenius equation.) The loss of this protein is less than 5% within the expiration date under appropriate storage condition.

[SEQUENCES]

The sequence of the target protein is listed below.

PIKKV MVANRGEIAI RVFRACTELG IRTVAIYSEQ DTGQMHRQKA DEAYLIGRGL
APVQAYLHIP DIIKVAKENN VDAVHPGYGF LSERADFAQA CQDAGVRFIG PSPEVVRKMG
DKVEARAI AI AAGVPVVP GT DAPITSLHEA HEFSNTYGFP IIFKAAYGGG GRGMRVVHSY
EELEENYTRA YSEALAAF GN GALFVEKFIE KPRHIEVQIL GDQYGNILHL YERDCSIQRR
HQQVVEIAPA AHLDPQLRTR LTSDSVKLAK QVGYENAGTV EFLVDRHGKH YFIEVNSRLQ
VEHTVTEEIT DVDLVHAQIH VAEGRSLPDL GLRQENIRIN GCAIQCRVTT EDPARSFQPD
TGRIEVFRSG EGMGIRLDNA SAFQGAVISP HYDSSLVKVI AHGKDHPTAA TKMSRALAEF
RVRGVKTNIA FLQNVLNNQQ FLAGTVDTQF IDENPE