

RPE036Hu01 100ug

Recombinant Protein Phosphatase 6, Catalytic Subunit (PPP6C)

Organism Species: Homo sapiens (Human)

Instruction manual

FOR IN VITRO USE AND RESEARCH USE ONLY

NOT FOR USE IN CLINICAL DIAGNOSTIC PROCEDURES

10th Edition (Revised in Jan, 2014)

[PROPERTIES]

Residues: Pro3~Leu305

Tags: Two N-terminal Tags, His-tag and T7-tag

Accession: O00743

Host: *E. coli*

Subcellular Location: Cytoplasm.

Purity: >95%

Endotoxin Level: <1.0EU per 1µg

(determined by the LAL method).

Formulation: Supplied as lyophilized form in 20mM Tris,

150mM NaCl, pH8.0, containing 1mM EDTA, 1mM DTT,

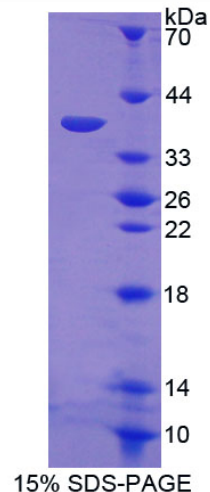
0.01% sarcosyl, 5% trehalose, and preservative.

Predicted isoelectric point: 5.4

Predicted Molecular Mass: 38.6kDa

Applications: SDS-PAGE; WB; ELISA; IP.

(May be suitable for use in other assays to be determined by the end user.)



[USAGE]

Reconstitute in sterile ddH₂O.

[STORAGE AND STABILITY]

Storage: Avoid repeated freeze/thaw cycles.

Store at 2-8°C for one month.

Aliquot and store at -80°C for 12 months.

Stability Test: The thermal stability is described by the loss rate of the target protein. The loss rate was determined by accelerated thermal degradation test, that is, incubate the protein at 37°C for 48h, and no obvious degradation and precipitation were observed. (Referring from China Biological Products Standard, which was calculated by the Arrhenius equation.) The loss of this protein is less than 5% within the expiration date under appropriate storage condition.

[SEQUENCES]

The sequence of the target protein is listed below.

PLDLDKYV EIARLCKYLP ENDLKRLCDY VCDLLEESN VQPVSTPVTV CGDIHGQFYD
LCELFRTGGQ VPDTNYIFMG DFVDRGYYSL ETFTYLLALK AKWPDRITLL RGNHESRQIT
QVYGFYDECQ TKYGNANAWR YCTKVFDMILT VAALIDEQIL CVHGGGLSPDI KTLQDQIRTIE
RNQEIPHKGA FCDLVWSDPE DVDTWAIWSPR GAGWLFQAKV TNEFVHINNL KLICRAHQLV
HEGYKFMFDE KLVTVWSAPN YCYRCGNIAS IMVFKDVNTR EPKLFRAVPD SERVIPPRTT
TPYFL