

**RPE029Hu01 50µg**

**Recombinant Protein Phosphatase 2, Catalytic Subunit Alpha Isoform (PPP2Ca)**

**Organism Species: *Homo sapiens (Human)***

***Instruction manual***

FOR RESEARCH USE ONLY

NOT FOR USE IN CLINICAL DIAGNOSTIC PROCEDURES

---

13th Edition (Revised in Aug, 2023)

**[ PROPERTIES ]**

**Source:** Prokaryotic expression

**Host:** *E.coli*

**Residues:** Met1~Leu309

**Tags:** N-terminal His Tag

**Subcellular Location:** Nucleus, Cytoplasm, Chromosome

**Purity:** > 95%

**Traits:** Freeze-dried powder

**Buffer formulation:** 20mM Tris, 150mM NaCl, pH8.0, containing 0.01% skl, 5%Trehalose.

**Original Concentration:** 600µg/mL

**Applications:** Positive Control; Immunogen; SDS-PAGE; WB.

(May be suitable for use in other assays to be determined by the end user.)

**Predicted isoelectric point:** 5.3

**Predicted Molecular Mass:** 39.3kDa

**Accurate Molecular Mass:** 39kDa as determined by SDS-PAGE reducing conditions.

**[ USAGE ]**

Reconstitute in 20mM Tris, 150mM NaCl (pH8.0) to a concentration of 0.1-1.0 mg/mL. Do not vortex.

**[ STORAGE AND STABILITY ]**

**Storage:** Avoid repeated freeze/thaw cycles.

Store at 2-8°C for one month.

Aliquot and store at -80°C for 12 months.

**Stability Test:** The thermal stability is described by the loss rate. The loss rate was determined by accelerated thermal degradation test, that is, incubate the protein at 37°C for 48h, and no obvious degradation and precipitation were observed. The loss rate is less than 5% within the expiration date under appropriate storage condition.

**[ SEQUENCE ]**

MDEKVFTKEL DQWIEQLNEC KQLSESQVKS LCEKAKEILT KESNVQEVRC  
PVTVCGDVHG QFHDLMELEFR IGGKSPDTNY LFMGDYVDRG YYSVETVLL  
VALKVRYRER ITILRGNHES RQITQVYGFY DECLRKYGNA NVWKYFTDLF  
DYLPLTALVD GQIFCLHGGL SPSIDTLDHI RALDRLQEVV HEGPMC DLLW  
SDPDRGGWG ISPRGAGYTF GQDISETFNH ANGLTLVSRA HQLVMEGYNW  
CHDRNVVTIF SAPNYCYRCG NQAAIMELDD TLKYSFLQFD PAPRRGEPHV  
TRRTPDYFL

**[ IDENTIFICATION ]**

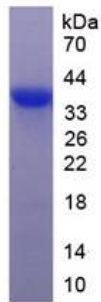


Figure. SDS-PAGE

**[ IMPORTANT NOTE ]**

The kit is designed for research use only, we will not be responsible for any issue if the kit was used in clinical diagnostic or any other procedures.