

RPB884Hu01 10 μ g

Recombinant Phospholamban (PLN)

Organism Species: *Homo sapiens (Human)*

Instruction manual

FOR RESEARCH USE ONLY

NOT FOR USE IN CLINICAL DIAGNOSTIC PROCEDURES

13th Edition (Revised in Aug, 2023)

[PROPERTIES]

Source: Prokaryotic expression

Host: *E.coli*

Residues: Met1~Leu52

Tags: N-terminal His and GST Tag

Subcellular Location: Membrane, Mitochondrion, Endoplasmic reticulum lumen

Purity: > 90%

Traits: Freeze-dried powder

Buffer formulation: PBS, pH7.4, containing 0.01% Sarcosyl, 1mM DTT, 5% Trehalose and Proclin300.

Original Concentration: 100µg/mL

Applications: Positive Control; Immunogen; SDS-PAGE; WB.

(May be suitable for use in other assays to be determined by the end user.)

Predicted isoelectric point: 7.2

Predicted Molecular Mass: 36.1kDa

Accurate Molecular Mass: 36kDa as determined by SDS-PAGE reducing conditions.

[USAGE]

Reconstitute in ddH₂O to a concentration of 0.1-0.5 mg/mL. Do not vortex.

[STORAGE AND STABILITY]

Storage: Avoid repeated freeze/thaw cycles.

Store at 2-8°C for one month.

Aliquot and store at -80°C for 12 months.

Stability Test: The thermal stability is described by the loss rate. The loss rate was determined by accelerated thermal degradation test, that is, incubate the protein at 37°C for 48h, and no obvious degradation and precipitation were observed. The loss rate is less than 5% within the expiration date under appropriate storage condition.

[SEQUENCE]

MEKVQYLTRS AIRRASTIEM PQARQKLQN LFINFCLILI CLLICIIIVM
LL

[IDENTIFICATION]

ATGGAGAAAGTCCAATACCTCACTCAGCTATAAGAGAGAGCTCAACCAATGAAGTGCCTCAACAAGCAGCTCAAAAAGTAGAGAACTATTATCAATTTCTGTCTCATCTAATATGTCTCTTCTGATCTGTATCATCGTGATGCTTCTCTGACTCGAGCACACCAACCAACACTGAGATCCGGCTGCTAACAAGCCCGA
M E K V Q Y L T R S A I R R A S T I E M P Q Q A R Q K L Q N L F I N F C L I L I C L L L I C I I V M L L * L E E H H H H H * D P A A N K A R I

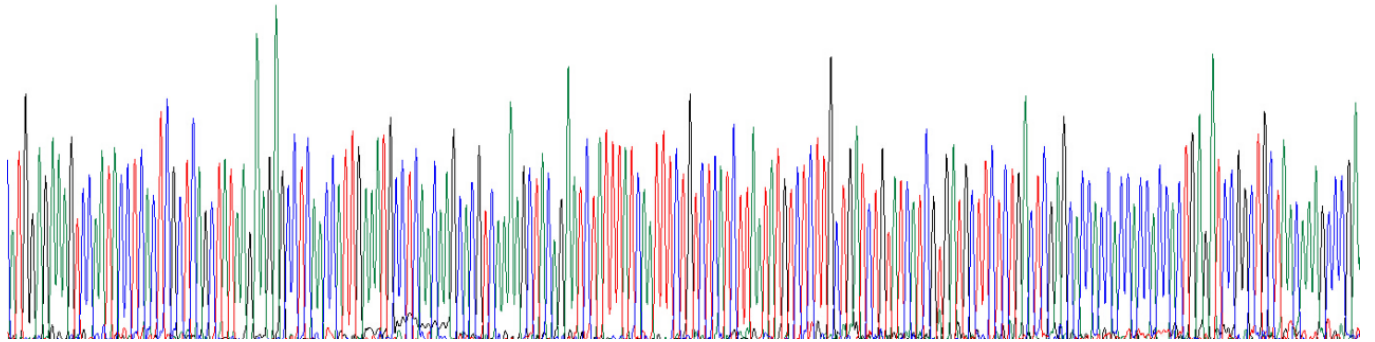
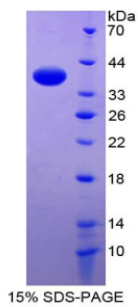


Figure. Gene Sequencing (Extract)



[IMPORTANT NOTE]

The kit is designed for research use only, we will not be responsible for any issue if the kit was used in clinical diagnostic or any other procedures.