

RPB268Ra01 50 μ g
Recombinant Phenol Sulfotransferase (PST)
Organism Species: Rattus norvegicus (Rat)
Instruction manual

FOR IN VITRO USE AND RESEARCH USE ONLY
NOT FOR USE IN CLINICAL DIAGNOSTIC PROCEDURES

12th Edition (Revised in Aug, 2016)

[**PROPERTIES**]

Source: Prokaryotic expression.

Host: *E. coli*

Residues: Phe3~Leu291

Tags: N-terminal His-Tag

Tissue Specificity: Liver, Kidney, Heart.

Subcellular Location: Cytoplasm.

Purity: >95%

Traits: Freeze-dried powder

Buffer formulation: PBS, pH7.4, containing 1mM DTT, 5% trehalose, 0.01% sarcosyl and Proclin300.

Original Concentration: 200ug/mL

Applications: SDS-PAGE; WB; ELISA; IP; CoIP; Purification; Amine Reactive Labeling.

(May be suitable for use in other assays to be determined by the end user.)

Predicted isoelectric point: 6.6

Predicted Molecular Mass: 34.9kDa

Accurate Molecular Mass: 35kDa as determined by SDS-PAGE reducing conditions.

[**USAGE**]

Reconstitute in PBS (pH7.4) to a concentration of 0.1-1.0 mg/mL. Do not vortex.

[**STORAGE AND STABILITY**]

Storage: Avoid repeated freeze/thaw cycles.

Store at 2-8°C for one month.

Aliquot and store at -80°C for 12 months.

Stability Test: The thermal stability is described by the loss rate. The loss rate was determined by accelerated thermal degradation test, that is, incubate the protein at 37°C for 48h, and no obvious degradation and precipitation were observed. The loss rate is less than 5% within the expiration date under appropriate storage condition.

[SEQUENCE]

```
FSRPPLVH VKGIPLIKYF AETIGPLQNF TAWPDDLLIS TYPKSGTTWM
SEILDMIYQG GKLEKCGRAP IYARVPFLEF KCPGVPSGLE TLEETPAPRL
LKTHLPLSLL PQSLLDQKVK VIYIARNAKD VVVSYYNFYN MAKLHPDPGT
WDSFLENFMD GEVSYGSWYQ HVKEWELRH THPVLYLFYE DIKENPKREI
KKILEFLGRS LPEETVDSIV HHTSFKMKKE NCMTNYTTIP TEIMDHNVSP
FMRKGTGDW KNTFTVAQNE RFDAHYAKTM TDCDFKFRCE L
```

[IDENTIFICATION]

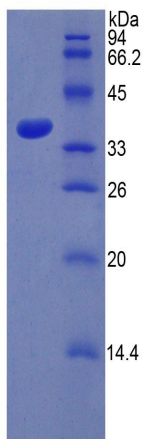


Figure 1. SDS-PAGE