

RPX260Hu03 100µg
Recombinant PAI-1/tPA Complex (tPA/PAI1)
Organism Species: *Homo sapiens (Human)*
Instruction manual

FOR RESEARCH USE ONLY
NOT FOR USE IN CLINICAL DIAGNOSTIC PROCEDURES

12th Edition (Revised in Aug, 2016)

[PROPERTIES]

Source: Prokaryotic expression

Host: *E.coli*

Residues: Ser36~Pro562+GGGS*3+Val24~Pro402

Tags: N-terminal His Tag

Subcellular Location: Secreted

Purity: > 80%

Traits: Freeze-dried powder

Buffer formulation: PBS, pH7.4, containing 0.01% SKL, 1mM DTT, 5% Trehalose and Proclin300.

Original Concentration: 200µg/mL

Applications: Positive Control; Immunogen; SDS-PAGE; WB.

(May be suitable for use in other assays to be determined by the end user.)

Predicted isoelectric point: 8.3

Predicted Molecular Mass: 78.3kDa

Accurate Molecular Mass: 70kDa as determined by SDS-PAGE reducing conditions.

Phenomenon explanation:

The possible reasons that the actual band size differs from the predicted are as follows:

1. Splice variants: Alternative splicing may create different sized proteins from the same gene.
2. Relative charge: The composition of amino acids may affect the charge of the protein.
3. Post-translational modification: Phosphorylation, glycosylation, methylation etc.
4. Post-translation cleavage: Many proteins are synthesized as pro-proteins, and then cleaved to give the active form.
5. Polymerization of the target protein: Dimerization, multimerization etc.

[USAGE]

Reconstitute in 10mM PBS (pH7.4) to a concentration of 0.1-1.0 mg/mL. Do not vortex.

[STORAGE AND STABILITY]

Storage: Avoid repeated freeze/thaw cycles.

Store at 2-8°C for one month.

Aliquot and store at -80°C for 12 months.

Stability Test: The thermal stability is described by the loss rate. The loss rate was determined by accelerated thermal degradation test, that is, incubate the protein at 37°C for 48h, and no obvious degradation and precipitation were observed. The loss rate is less than 5% within the expiration date under appropriate storage condition.

[SEQUENCE]

```

SYQVICRDEKTQMIYQQHQSWLRFVLRNSRVEYCWNSGRAQCHSVPVKSCSEPRCFNGGTCQQALYF SDFVCQCPEGFAGKCCCEIDTRA
TCYEDQGI SYRGTWSTAESGAECTNWNSSALAQKPYSGRRFPDAIRLGLGNHNYCRNPD RDSKFWCYVFKAGKYSSEFCSTPACSEGNSDC
YFGNGSAYRGTHSLTESGASCLPWNSMILIGKVYTAQNPSAQA LGLGKHN YCRNPDGDAKPWCHVLKNRRLTWEYCDVPS CSTCGLRQYS
QPQFRIKGG LFADIASHPWQA AIFAKHRRSPGERFLCGGILISSCWILSAAHCFQERFP PPHLTVILGRTYRVVPG EEEQKFEVEKYI VH
KEFDDDTYDNDIAL LQLKSDSSRCAQESSVVRTVCLPPADLQLPDWTECELSGYGKHEALSPFYSERLKEAHVRLYPSSRCTSQHLLNRT
VTDNMLCAGDTRSGGPQANLHDACQGDSSGGLVCLNDGRMTLVGII SWGLGCGQKDVPGVYTKVTNYLDWIRDNMRPGGGGSGGGSGGG
GSVHHPPSYVAHLASDFGVRV FQQVAQASKDRNVVFS PYGVASVLAMLQLTTGGETQQQIQ AAMGFKIDDKGMAPALRHLYKELMGPWNK
DEISTDAIFVQRDLKL VQGFMPHFFRLFRSTVKQVDF SEVERARF IINDWVKTHTKGMI SNLLGKGAVDQLTRLVLVNALYFNGQWKTP
FPDSSTHRRLFHKSDGSTVSVPMMAQTNKFNYTEFTTPDGHYYDILELPYHGD TLSMFI AAPYEKEVPLSALTNILSAQLI SHWKGNMTR
LPRLLVLPKFSLETEVDLRKPLENLGMTDMFRQFQADFTSLSDQEPLHVAQALQKVKIEVNESGTVASSSTAVIVSARMAPEEIIIMDRPF
LFVVRHNPTGTVLFMGQVMEP
    
```

[IDENTIFICATION]

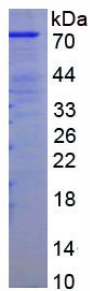


Figure. SDS-PAGE

[IMPORTANT NOTE]

The kit is designed for research use only, we will not be responsible for any issue if the kit was

used in clinical diagnostic or any other procedures.