

RPC680Ra01 100µg

Recombinant Nicastrin (NCSTN)

Organism Species: Rattus norvegicus (Rat)

Instruction manual

FOR IN VITRO USE AND RESEARCH USE ONLY

NOT FOR USE IN CLINICAL DIAGNOSTIC PROCEDURES

10th Edition (Revised in Jan, 2014)

[PROPERTIES]

Residues: Val35~Gln534

Tags: Two N-terminal Tags, His-tag and T7-tag

Accession: Q8CGU6

Host: *E. coli*

Subcellular Location: Membrane, Single-pass
type I membrane protein Potential. Melanosome.

Purity: >95%

Endotoxin Level: <1.0EU per 1µg
(determined by the LAL method).

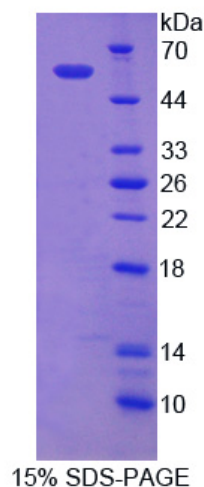
Formulation: Supplied as lyophilized form in PBS,
pH7.4, containing 5% trehalose, 0.01% sarcosyl.

Predicted isoelectric point: 5.2

Predicted Molecular Mass: 59.1kDa

Applications: SDS-PAGE; WB; ELISA; IP.

(May be suitable for use in other assays to be determined by the end user.)



[USAGE]

Reconstitute in sterile PBS, pH7.2-pH7.4.

[STORAGE AND STABILITY]

Storage: Avoid repeated freeze/thaw cycles.

Store at 2-8°C for one month.

Aliquot and store at -80°C for 12 months.

Stability Test: The thermal stability is described by the loss rate of the target protein. The loss rate was determined by accelerated thermal degradation test, that is, incubate the protein at 37°C for 48h, and no obvious degradation and precipitation were observed. (Referring from China Biological Products Standard, which was calculated by the Arrhenius equation.) The loss of this protein is less than 5% within the expiration date under appropriate storage condition.

[SEQUENCES]

The sequence of the target protein is listed below.

VERKIY IPLNKTAPCV RLLNATHQIG CQSSISGDTG VIHVVEKEDD LKWVLTGPN
PPYMVLLLEGK LFTRDIMEKL KGETSRIAGL AVTLAKPNST SSFSPSVQCP NDGFGIYSNS
YGPEFAHCKK TLWNELGNGL AYDDFSFPIF LLEDENETKV IKQCYQDHNL GQNGSAPSPF
LCAMQLFSHM HAVISTATCM RRSFIQSTFS INPEIVCDPL SDYNVWSMLK PINTSGGLEP
DVRVVVAATR LDSRSFFWNV APGAESAVAS FVTQLAAAEA LHKAPDVTTL PRNVMFVFFQ
GETFDYIGSS RMVYDMEN GK FPVRLNIDS FVELGQVALR TSLELWMHTD PMSQKNESVK
NQVEDLLVTL EQSGADTPQV VLSRLVQSQA LPPSSLQRFL RARNISGVVL ADHSGSFHNR
YYQSIYDTAE NINVTYPESQ SPEEDLNFVT DTAKALADVA TVLARALYKL AGGTNFNNSI
QADPQTVTRL LYGFLVRANN SWFQ