

RPC615Mu01 50µg
Recombinant Myeloid Cell Leukemia Sequence 1, Bcl2 Related (MCL1)
Organism Species: Mus musculus (Mouse)
Instruction manual

FOR IN VITRO USE AND RESEARCH USE ONLY
NOT FOR USE IN CLINICAL DIAGNOSTIC PROCEDURES

12th Edition (Revised in Aug, 2016)

[**PROPERTIES**]

Source: Prokaryotic expression.

Host: *E. coli*

Residues: Phe2~Gly307

Tags: N-terminal His-Tag

Tissue Specificity: Placenta, Breast.

Subcellular Location: Membrane; Single-pass membrane protein. Cytoplasm.

Mitochondrion. Nucleus, nucleoplasm.

Purity: >95%

Traits: Freeze-dried powder

Buffer formulation: 20mM Tris, 150mM NaCl, pH8.0, containing 1mM EDTA, 1mM DTT, 0.01% sarcosyl, 5%Trehalose and Proclin300.

Original Concentration: 200µg/mL

Applications: Positive Control; Immunogen; SDS-PAGE; WB.

(May be suitable for use in other assays to be determined by the end user.)

Predicted isoelectric point: 6.2

Predicted Molecular Mass: 36.4kDa

Accurate Molecular Mass: 38kDa as determined by SDS-PAGE reducing conditions.

[**USAGE**]

Reconstitute in 20mM Tris, 150mM NaCl (pH8.0) to a concentration of 0.1-1.0 mg/mL. Do not vortex.

[**STORAGE AND STABILITY**]

Storage: Avoid repeated freeze/thaw cycles.

Store at 2-8°C for one month.

Aliquot and store at -80°C for 12 months.

Stability Test: The thermal stability is described by the loss rate. The loss rate was determined by accelerated thermal degradation test, that is, incubate the protein at 37°C for 48h, and no obvious degradation and precipitation were observed. The loss rate is less than 5% within the expiration date under appropriate storage condition.

[SEQUENCE]

```
FGLRRNAVI  GLNLYCGGAS  LGAGGGSPAG  ARLVAEEAKA  RREGGGEAAL  
LPGARVVARP  PPVGAEDPDV  TASAERRLHK  SPGLLAVPPE  EMAASAAAAI  
VSPEEELDGC  EPEAIGKRPA  VLPLLERVSE  AAKSSGADGS  LPSTPPPPEE  
EEDDLRYQSL  EIISRYLREQ  ATGSKDSKPL  GEAGAAGRRA  LETLRRVGDG  
VQRNHETAFQ  GMLRKLDIKN  EGDVKSFSRV  MVHVFKDGT  NWGRIVTLIS  
FGAFVAKHLK  SVNQESFIEP  LAETITDVLV  RTKRDWLVKQ  RGWDGFVEFF  
HVQDLEG
```

[IDENTIFICATION]

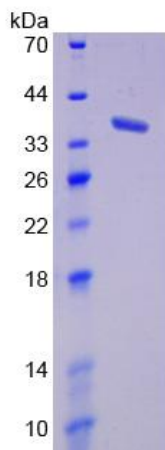


Figure 1. SDS-PAGE