

**RPA403Hu01 10 $\mu$ g**  
**Recombinant Mucin 17 (MUC17)**  
**Organism Species: Homo sapiens (Human)**  
***Instruction manual***

FOR IN VITRO USE AND RESEARCH USE ONLY  
NOT FOR USE IN CLINICAL DIAGNOSTIC PROCEDURES

10th Edition (Revised in Jan, 2014)

**[ PROPERTIES ]**

**Residues:** Thr3773~Thr3998

**Tags:** N-terminal His-Tag

**Accession:** Q685J3

**Host:** *E. coli*

**Subcellular Location:** Cell membrane;  
Single-pass membrane protein.

**Purity:** >95%

**Endotoxin Level:** <1.0EU per 1 $\mu$ g  
(determined by the LAL method).

**Formulation:** Supplied as lyophilized form in 10mM  
PBS, pH7.4, containing 1mM DTT, 5% trehalose,  
0.01% sarcosyl and preservative.

**Predicted isoelectric point:** 4.9

**Predicted Molecular Mass:** 24.3kDa

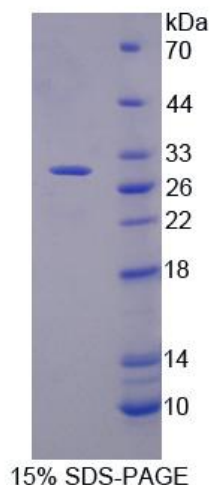
**Accurate Molecular Mass:** 30kDa as determined by SDS-PAGE reducing conditions.

**Applications:** SDS-PAGE; WB; ELISA; IP.

(May be suitable for use in other assays to be determined by the end user.)

**Note:** The possible reasons that the actual band size differs from the predicted are as follows:

1. Splice variants: Alternative splicing may create different sized proteins from the same gene.
2. Relative charge: The composition of amino acids may affects the charge of the protein.
3. Post-translational modification: Phosphorylation, glycosylation, methylation etc.
4. Post-translation cleavage: Many proteins are synthesized as pro-proteins, and then cleaved to give the active form.
5. Polymerization of the target protein: Dimerization, multimerization etc.



## [ USAGE ]

Reconstitute in sterile ddH<sub>2</sub>O.

## [ STORAGE AND STABILITY ]

**Storage: Avoid repeated freeze/thaw cycles.**

Store at 2-8°C for one month.

Aliquot and store at -80°C for 12 months.

**Stability Test:** The thermal stability is described by the loss rate of the target protein. The loss rate was determined by accelerated thermal degradation test, that is, incubate the protein at 37°C for 48h, and no obvious degradation and precipitation were observed. (Referring from China Biological Products Standard, which was calculated by the Arrhenius equation.) The loss of this protein is less than 5% within the expiration date under appropriate storage condition.

## [ SEQUENCES ]

The sequence of the target protein is listed below.

TPSIPSVY TSMSMTTASE GSSSPTTLEG TTTMPMSTTS ERSTLLTTVL ISPISVMSPS  
EASTLSTPPG DTSTPLLTST KAGSFSIPAE VTTIRISITS ERSTPLTLL VSTTLPTSFP  
GASIASTPPL DTSTTFTPST DTASTPTIPV ATTISVSVIT EGSTPGTTIF IPSTPVTSSST  
ADVFPATTGA VSTPVITSTE LNPSTSSSS TTTSFSTTKE FTTPAMTT

## [ REFERENCES ]

1. Malmberg E.K., *et al.* (2007) *Biochem. J.* 410:283-289.
2. Ho J.J.L., *et al.* (2002) *Int. J. Oncol.* 23:585-592.
3. Gum J.R. Jr., *et al.* (2001) *Biochem. Biophys. Res. Commun.* 291:466-475.
4. Van Klinken B.J.-W., *et al.* (1996) *Biochem. Biophys. Res. Commun.* 238:143-148.