

**RPB766Mu01 10µg**

**Recombinant Lectin Galactoside Binding, Soluble 3 Binding Protein (LGALS3BP)**

**Organism Species: *Mus musculus* (Mouse)**

***Instruction manual***

FOR RESEARCH USE ONLY

NOT FOR USE IN CLINICAL DIAGNOSTIC PROCEDURES

---

12th Edition (Revised in Aug, 2016)

**[ PROPERTIES ]**

**Source:** Prokaryotic expression

**Host:** *E.coli*

**Residues:** Thr19~Val577

**Tags:** N-terminal His Tag

**Subcellular Location:** Secreted, Extracellular matrix

**Purity:** > 90%

**Traits:** Freeze-dried powder

**Buffer formulation:** 20mM Tris, 150mM NaCl, pH8.0, containing 0.01% skl, 5%Trehalose.

**Original Concentration:** 50µg/mL

**Applications:** Positive Control; Immunogen; SDS-PAGE; WB.

(May be suitable for use in other assays to be determined by the end user.)

**Predicted isoelectric point:** 5.0

**Predicted Molecular Mass:** 66.0kDa

**Accurate Molecular Mass:** 66kDa as determined by SDS-PAGE reducing conditions.

**[ USAGE ]**

Reconstitute in ddH<sub>2</sub>O to a concentration less than or equal to 0.1mg/mL. Do not vortex.

**[ STORAGE AND STABILITY ]**

**Storage:** Avoid repeated freeze/thaw cycles.

Store at 2-8°C for one month.

Aliquot and store at -80°C for 12 months.

**Stability Test:** The thermal stability is described by the loss rate. The loss rate was determined by accelerated thermal degradation test, that is, incubate the protein at 37°C for 48h, and no obvious degradation and precipitation were observed. The loss rate is less than 5% within the expiration date under appropriate storage condition.

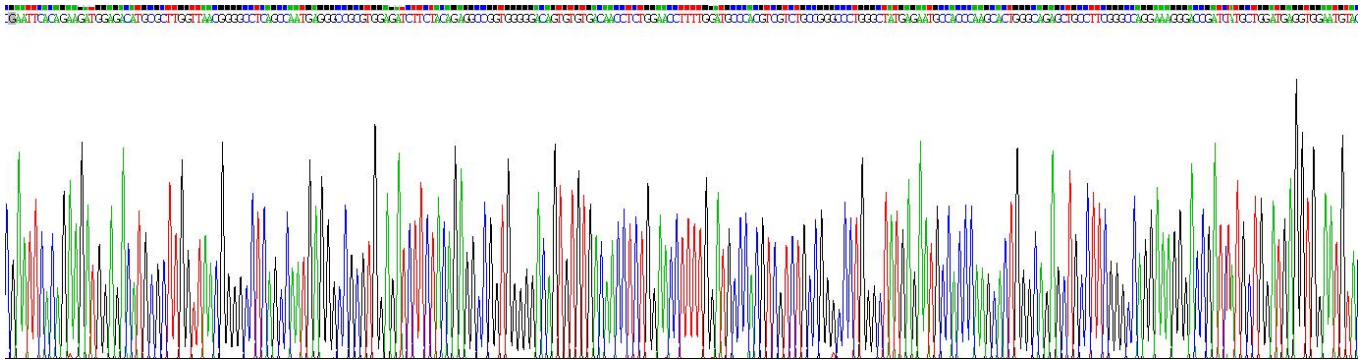
**[ SEQUENCE ]**

```

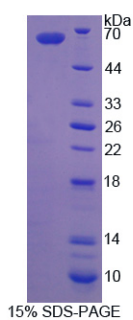
      TE DGMRLVNGA SANEGRVEIF YRGRWGTVCD
NLWNLLDAHV VCRALGYENA TQALGRAAFG PGKGPIMLDE VECTGTESSL
ASCRSLGWMV SRCGHEKDAG VVCSNDTTGL HILDLSGELS DALGQIFDSQ
QGCDLFIQVT GQGYEDLSLC AHTLILRTNP EAQALWQVVG SSVIMRVDAA
CMPVVRDFLR YFYSTRRIEVS MSSVKCLHKL ASAYGATELQ DYCGRLFATL
LPQDPTFHTP LDLYAYARAT GDSMLEDL CV QFLAWNFEPL TQSESWSAVP
TTLIQALLPK SELAVSSELD LLKAVDQWST ETIASHEDIE RLVEQVRFPM
MLPQELFELQ FNLSLYQDHQ ALFQRKTMQA LEFHTVPVEV LAKYKGLNLT
EDTYKPRLYT SSTWSSLVMA STWRAQRYEY NRYNQLYTYG YGSVARYNSY
QSFQTPQHPS FLFKDKQISW SATYLPTMQS CWNYGFSCTS NELPVLGLTT
SSYSNPTIGY ENRVLILCGG YSVVDVTSFE GSKAPIPTAL DTNSSKTPSL
FPCASGAFSS FRVVIRPFYL TNSTDMV

```

**[ IDENTIFICATION ]**



**Figure . Gene Sequencing (extract)**



**Figure. SDS-PAGE**

**[ IMPORTANT NOTE ]**

The kit is designed for research use only, we will not be responsible for any issue if the kit was used in clinical diagnostic or any other procedures.