

**RPS214Mu01 100µg**

**Recombinant Keratin 28 (KRT28)**

**Organism Species: Mus musculus (Mouse)**

***Instruction manual***

FOR IN VITRO USE AND RESEARCH USE ONLY

NOT FOR USE IN CLINICAL DIAGNOSTIC PROCEDURES

10th Edition (Revised in Jan, 2014)

## **[ PROPERTIES ]**

**Residues:** Met1~Phe462

**Tags:** Two N-terminal Tags, His-tag and GST-tag

**Accession:** A6BLY7

**Host:** *E. coli*

**Purity:** >95%

**Endotoxin Level:** <1.0EU per 1µg

(determined by the LAL method).

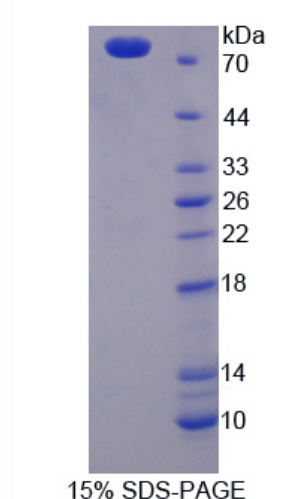
**Formulation:** Supplied as lyophilized form in PBS, pH7.4, containing 5% trehalose, 0.01% sarcosyl.

**Predicted isoelectric point:** 5.2

**Predicted Molecular Mass:** 80.3kDa

**Applications:** SDS-PAGE; WB; ELISA; IP.

(May be suitable for use in other assays to be determined by the end user.)



## **[ USAGE ]**

Reconstitute in sterile PBS, pH7.2-pH7.4.

## **[ STORAGE AND STABILITY ]**

**Storage: Avoid repeated freeze/thaw cycles.**

Store at 2-8°C for one month.

Aliquot and store at -80°C for 12 months.

**Stability Test:** The thermal stability is described by the loss rate of the target protein. The loss rate was determined by accelerated thermal degradation test, that is, incubate the protein at 37°C for 48h, and no obvious degradation and precipitation were observed. (Referring from China Biological Products Standard, which was calculated by the Arrhenius equation.) The loss of this protein is less than 5% within the expiration date under appropriate storage condition.

## **[ SEQUENCES ]**

The sequence of the target protein is listed below.

MSLRFSGGSR HVGIQSGSLR PPSGGAGFAG SSVAGGSVAG SGFSWALGGT  
LGSAPGGSHA TGALGNVSGV CFGSEGGLL SGNEKVTMQN LNNRLASYLD NVKALEEANS  
ELERKIKTWH EKYGPGSCRG LDRDYSKYHL TIEDLKSKII SSTAANANII LQIDNARLAA  
DDFRLKYENE LTLHQNVEAD INGLRRVLDE LTLCRTDQEL QYESLSEEMT YLKKNHHEEM  
KVLQCAAGGN VNVEMNAAPG VDLTVLLNNM RAEYEALAEQ NRRDAEAWFQ  
EKSATLQQQI SNDLGAATSA RTELTELKRS LQTLEIELQS LSATKHSLEC SLAETEGNYC  
SQLAQIQAQI SALEEQLHQV RTETEGQKLE HEQLLDIKAH LEKEIETYCR LIDGDENSCS  
VSKGFESGTS GNSPKDVSKT TLVKTVVEEI DQRGKVLSSR IHSIEEKMSK MSNGKAEQQRV  
PF