

**RPB958Mu01 10 $\mu$ g**  
**Recombinant Interferon Regulatory Factor 6 (IRF6)**  
**Organism Species: *Mus musculus* (Mouse)**  
***Instruction manual***

FOR RESEARCH USE ONLY  
NOT FOR USE IN CLINICAL DIAGNOSTIC PROCEDURES

---

12th Edition (Revised in Aug, 2016)

**[ PROPERTIES ]**

**Source:** Prokaryotic expression

**Host:** *E.coli*

**Residues:** Leu150~Thr445

**Tags:** N-terminal His Tag

**Subcellular Location:** Nucleus

**Purity:** > 97%

**Traits:** Freeze-dried powder

**Buffer formulation:** PBS, pH7.4, containing 0.01% SKL, 5% Trehalose.

**Original Concentration:** 50µg/mL

**Applications:** Positive Control; Immunogen; SDS-PAGE; WB.

(May be suitable for use in other assays to be determined by the end user.)

**Predicted isoelectric point:** 6.1

**Predicted Molecular Mass:** 37.2kDa

**Accurate Molecular Mass:** 38kDa as determined by SDS-PAGE reducing conditions.

**[ USAGE ]**

Reconstitute in ddH<sub>2</sub>O to a concentration of 0.1-0.2 mg/mL. Do not vortex.

**[ STORAGE AND STABILITY ]**

**Storage:** Avoid repeated freeze/thaw cycles.

Store at 2-8°C for one month.

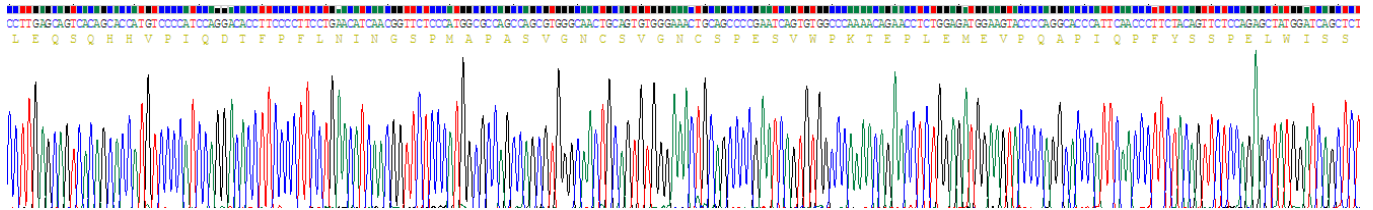
Aliquot and store at -80°C for 12 months.

**Stability Test:** The thermal stability is described by the loss rate. The loss rate was determined by accelerated thermal degradation test, that is, incubate the protein at 37°C for 48h, and no obvious degradation and precipitation were observed. The loss rate is less than 5% within the expiration date under appropriate storage condition.

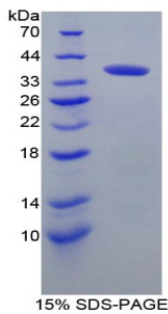
**[ SEQUENCE ]**

L EQSQHHVPIQ DTFPFLNING SPMAPASVGN CSVGNCSPEV VWPKTEPLEM EVPQAPIQPF YSSPELWISS  
 LPMTDLDIKF QYRGKEYGQT MIVSNPQGCR LFYGD LGPMP DQEELFGPVS LEQVKFPGPE HITNEKQKLF TSKLLDVM DR  
 GLILEVSGHA IYAIRLCQCK VYWSGPCAPS LAAPNLIERQ KVKVLCLET FLSELIAHQK GQIEKQPPFE IYLCFGE EWP  
 DGKPLERKLI LVQVIPVVAR MIYEMFSGDF TRSFDSGSVR LQISTPDIKD NIVAQLKQLY RILQT

**[ IDENTIFICATION ]**



**Figure. Gene Sequencing (Extract)**



**[ IMPORTANT NOTE ]**

The kit is designed for research use only, we will not be responsible for any issue if the kit was used in clinical diagnostic or any other procedures.