

RPC615Hu01 50µg

Recombinant Induced Myeloid Leukemia Cell Differentiation Protein Mcl-1 (MCL1)

Organism Species: *Homo sapiens* (Human)

Instruction manual

FOR RESEARCH USE ONLY

NOT FOR USE IN CLINICAL DIAGNOSTIC PROCEDURES

12th Edition (Revised in Aug, 2016)

[**PROPERTIES**]

Source: Prokaryotic expression

Host: *E.coli*

Residues: Arg6~Ile328

Tags: N-terminal His Tag

Subcellular Location: Membrane, Nucleus, Mitochondrion, Cytoplasm

Purity: > 90%

Traits: Freeze-dried powder

Buffer formulation: 20mM Tris, 150mM NaCl, pH8.0, containing 1mM EDTA, 1mM DTT, 0.01% SKL, 5% Trehalose .

Original Concentration: 200µg/mL

Applications: Positive Control; Immunogen; SDS-PAGE; WB.

(May be suitable for use in other assays to be determined by the end user.)

Predicted isoelectric point: 5.2

Predicted Molecular Mass: 38.3kDa

Accurate Molecular Mass: 38kDa as determined by SDS-PAGE reducing conditions.

[**USAGE**]

Reconstitute in 20mM Tris, 150mM NaCl (pH8.0) to a concentration of 0.1-1.0 mg/mL. Do not vortex.

[**STORAGE AND STABILITY**]

Storage: Avoid repeated freeze/thaw cycles.

Store at 2-8°C for one month.

Aliquot and store at -80°C for 12 months.

Stability Test: The thermal stability is described by the loss rate. The loss rate was determined by accelerated thermal degradation test, that is, incubate the protein at 37°C for 48h, and no obvious degradation and precipitation were observed. The loss rate is less than 5% within the expiration date under appropriate storage condition.

[SEQUENCE]

```

RNAVI  GLNLYCGGAG  LGAGSGGATR  PGGRLATEK  EASARREIGG
GEAGAVIGGS  AGASPPSTLT  PDSRRVARPP  PIGAEVPDVT  ATPARLLFFA
PTRRAAPLEE  MEAPAADAIM  SPEEELDGYE  PEPLGKRPAV  LPILLELVGES
GNNTSTDGSL  PSTPPPAEEE  EDELYRQSLE  IISRYLREQA  TGAKDTKPMG
RSGATSRKAL  ETLRRVGDGV  QRNHETAFQG  MLRKLDIKNE  DDVKLSLRVM
IHFVSDGVTN  WGRIVTLISF  GAFVAKHLKT  INQESCIEPL  AESITDVLVR
TKRDWLVKQR  GWDGFVEFFH  VEDLEGGI
  
```

[IDENTIFICATION]

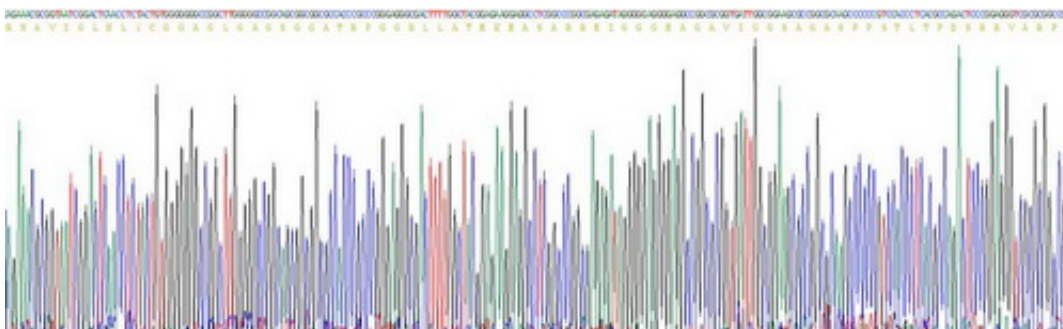


Figure . Gene Sequencing (extract)

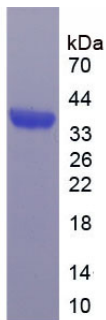


Figure. SDS-PAGE

[IMPORTANT NOTE]

The kit is designed for research use only, we will not be responsible for any issue if the kit was used in clinical diagnostic or any other procedures.