

RPB057Hu01 100µg

Recombinant High Mobility Group Protein 17 (HMG17)

Organism Species: Homo sapiens (Human)

Instruction manual

FOR IN VITRO USE AND RESEARCH USE ONLY

NOT FOR USE IN CLINICAL DIAGNOSTIC PROCEDURES

11th Edition (Revised in May, 2016)

[PROPERTIES]

Source: Prokaryotic expression.

Host: *E. coli*

Residues: Pro2~Gln81

Homology: Mouse 97%, rat 97%

Tissue Specificity: Eye, brain, lung.

Subcellular Location: Nucleus. Cytoplasm.

Purity: >90%

Endotoxin Level: <1.0EU per 1µg (determined by the LAL method).

Traits: Freeze-dried powder

Buffer formulation: PBS, pH7.4, containing 1mM DTT, 5% trehalose, 0.01% sarcosyl and Proclin300.

Original Concentration: 200ug/mL

Applications: SDS-PAGE; WB; ELISA; IP; CoIP; Reporter Assays; Purification; Amine Reactive Labeling.

(May be suitable for use in other assays to be determined by the end user.)

Predicted isoelectric point: 10.2

Predicted Molecular Mass: 12.3kDa

Accurate Molecular Mass: 15kDa as determined by SDS-PAGE reducing conditions.

[USAGE]

Reconstitute in PBS (pH7.4) to a concentration of 0.1-1.0 mg/mL. Do not vortex.

Note: It is better to add glycerol to keep stability after reconstituted.

[STORAGE AND STABILITY]

Storage: Avoid repeated freeze/thaw cycles.

Store at 2-8°C for one month.

Aliquot and store at -80°C for 12 months.

Stability Test: The thermal stability is described by the loss rate. The loss rate was determined by accelerated thermal degradation test, that is, incubate the protein at 37°C for 48h, and no obvious degradation and precipitation were observed. The loss rate is less than 5% within the expiration date under appropriate storage condition.

[SEQUENCE]

```
PKRKAEGDA KGDKAKVKDE PQRRSARLSA KPAPPKPEPK PKKAPAKKGE  
KVPKGGKKA DAGKEGNNPA ENGDAKTDQA Q
```

[IDENTIFICATION]

```
CCGACGAGAAAGGC TG AAGGGGATGC TAAAGGAGATAAGCAAMGG TG AAGGACGAMCCACAGAGAGATDCCGGAGG TTGTCCTAAAGCTGCTCTCCAAAGCCAGAGCCGAGCCCTAAAGAGGCGCC TCCAAAGAGGGAGAGAGSTACCCAAAGGGAAAMGGGAAAGCTGATCTCGCAAGGAGGGG  
F KR RKA E G DAK G DKA KAKYK D E P Q R R S A R L S A K P A P P K P E P K P K A P A K K G E K V P K G K K G K A D A G K E G :
```

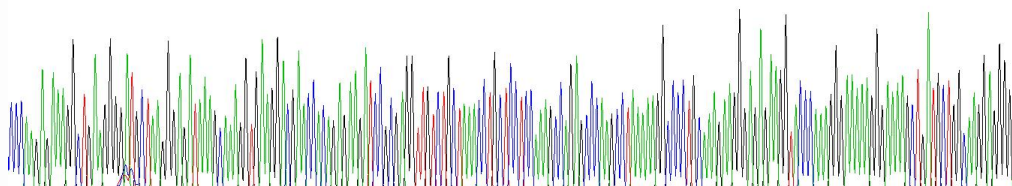


Figure 1. Gene Sequencing (Extract)

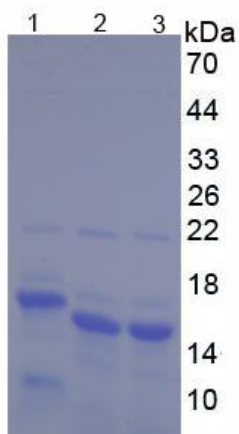


Figure 2. SDS-PAGE: Lane1: HMG17 with Tags

Lane2: HMG17 with No Tags

Lane3: HMG17 with No Tags