

RPA822Mu01 500µg
Recombinant Heat Shock Protein 60 (Hsp60)
Organism Species: *Mus musculus* (Mouse)
Instruction manual

FOR RESEARCH USE ONLY
NOT FOR USE IN CLINICAL DIAGNOSTIC PROCEDURES

13th Edition (Revised in Aug, 2023)

[PROPERTIES]

Source: Prokaryotic expression

Host: *E.coli*

Residues: Lys28~Phe573

Tags: N-terminal His Tag

Subcellular Location: Mitochondrion

Purity: > 90%

Traits: Freeze-dried powder

Buffer formulation: 20mM Tris, 150mM NaCl, pH8.0, containing 0.01% skl, 5%Trehalose.

Original Concentration: 600µg/mL

Applications: Positive Control; Immunogen; SDS-PAGE; WB.

(May be suitable for use in other assays to be determined by the end user.)

Predicted isoelectric point: 5.9

Predicted Molecular Mass: 61.4kDa

Accurate Molecular Mass: 65kDa as determined by SDS-PAGE reducing conditions.

Phenomenon explanation:

The possible reasons that the actual band size differs from the predicted are as follows:

1. Splice variants: Alternative splicing may create different sized proteins from the same gene.
2. Relative charge: The composition of amino acids may affects the charge of the protein.
3. Post-translational modification: Phosphorylation, glycosylation, methylation etc.
4. Post-translation cleavage: Many proteins are synthesized as pro-proteins, and then cleaved to give the active form.
5. Polymerization of the target protein: Dimerization, multimerization etc.

[USAGE]

Reconstitute in 20mM Tris, 150mM NaCl (pH8.0) to a concentration of 0.1-1.0 mg/mL. Do not vortex.

[STORAGE AND STABILITY]

Storage: Avoid repeated freeze/thaw cycles.

Store at 2-8°C for one month.

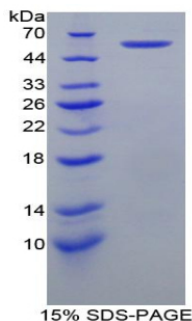
Aliquot and store at -80°C for 12 months.

Stability Test: The thermal stability is described by the loss rate. The loss rate was determined by accelerated thermal degradation test, that is, incubate the protein at 37°C for 48h, and no obvious degradation and precipitation were observed. The loss rate is less than 5% within the expiration date under appropriate storage condition.

[SEQUENCE]

			KDV	KFGADARALM	LQGVDLLADA
VAVTMGPKGR	TVIIEQSWGS	PKVTKDGVTV	AKSIDLKDKY	KNIGAKLVQD	
VANNTNEEAG	DGTTTATVLA	RSIAKEGF EK	ISKGANPVEI	RRGVMLAVDA	
VIAELKKQSK	PVTTPEEIAQ	VATISANGDK	DIGNIISDAM	KKVGRKGVIT	
VKDGTKLNDE	LEIIEGMKFD	RGYISPYFIN	TSKGQKCEFQ	DAYVLLSEKK	
ISSVQSIVPA	LEIANHRKP	LVIIAEDVDG	EALSTLVLNR	LKVGLQVVAV	
KAPGFGDNRK	NQLKDMAIAT	GGAVFGEEGL	NLNLEDVQAH	DLGKVGIVIV	
TKDDAMLLKG	KGDKAHIEKR	IQEITEQLDI	TTSEYEKEKL	NERLAKLSDG	
VAVLKVGGTS	DVEVNEKKDR	VTDALNATRA	AVEEGIVLGG	GCALLRCIPA	
LDSLKPANED	QKIGIEIIKR	ALKIPAMTIA	KNAGVEGSLI	VEKILQSSSE	
VGYDAMLGDF	VNMVEKGIID	PTKVVRTALL	DAAGVASLLT	TAEAVVTEIP	
KEEKDPGMGA	MGGMGGGMGG	GMF			

[IDENTIFICATION]



[IMPORTANT NOTE]

The kit is designed for research use only, we will not be responsible for any issue if the kit was used in clinical diagnostic or any other procedures.